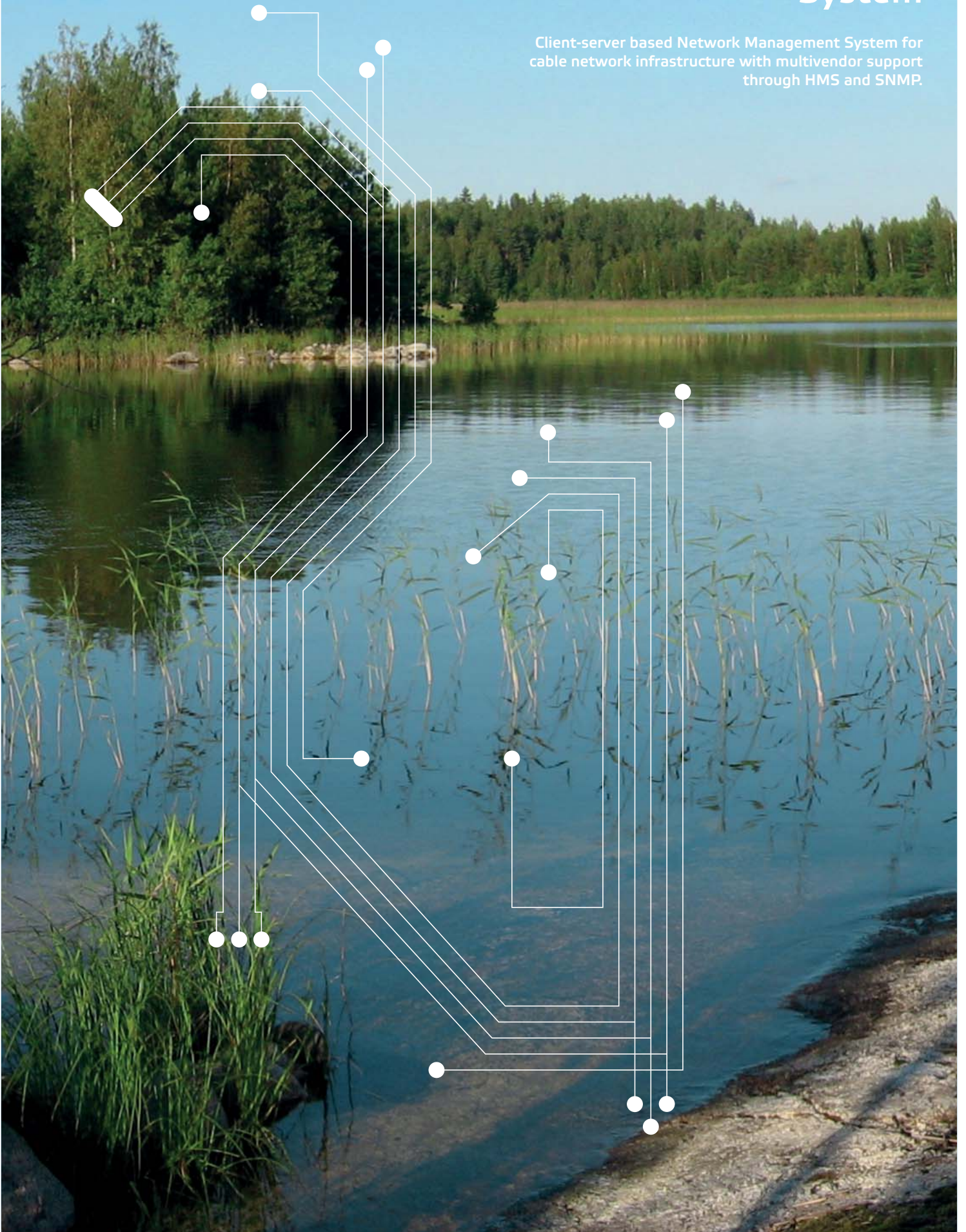


Network Management System

Client-server based Network Management System for cable network infrastructure with multivendor support through HMS and SNMP.



EMS 4 system for network management

Basic features

- Network inventory with automatic discovery
- Logging of alarm events
- Online element configuration
- Operating ingress control switches
- Measurement history logging and element configuration backup (for TSEMP elements)

EMS 4 advanced features

- Totally revised client software (EMS Explorer)
- Spatial views: Network map, block diagram, rack layout etc.
- Possibility to store or link attachments to elements
- Enhanced Luminato support
- Configurable views and workspace concept

Teleste has gathered formidable experience during the past decades on how HFC networks and optical headends should be managed. All of this experience has been applied to the CATVisor network management system.

Reduce downtime and unnecessary truck rolls

Network problems do occur. How these are handled and communicated makes a difference and reflects directly on the degree of customer satisfaction. Sending help right to the spot, as well as communicating with the concerned customers, becomes easier when you are able to view a real location and the impact area of a defected element.

Having information on network elements is one of the basic features in network management software. However, the software doesn't tell us where the elements are located and what the impact areas are. In addition to providing a view of all network elements and their status, the new CATVisor EMS 4 attaches spatial information to network elements. A typical spatial view is a network map that intuitively tells where the problem occurs and how customers are affected. This eliminates guesswork from network maintenance and management, thus reducing downtime and unnecessary truck rolls.

All necessary documentation immediately at hand

It is essential to be able to solve network problems quickly. The prompt availability of documentation plays a substantial role in this. Lots of time can be lost and a great deal of frustration generated both among the customers and the maintenance crew if documentation is not easily and quickly available when needed.

The EMS Network Management System and its attractive functionalities can save you a lot of time and nerves. CATVisor EMS makes it possible to react quickly, as it allows you to associate documents and links you to network elements in a logical manner. No matter the type of documentation – it can be a diagram or a photo of cabinet contents - all the stored documents are then related to the corresponding units and easily available in coherent manner.

In a complex network, the number of devices is growing all the time. With EMS 4, the problems in the network can be easily located, and the repair times are reduced significantly. After all, keeping customers satisfied, it is the amount of time that it takes to repair a network that counts.

Add new perspective to ingress control

It can be challenging to trace the source of ingress, as it can disappear as quickly as it appears. Despite the temporal nature of the problem, its consequences greatly increase subscriber dissatisfaction. It is ideal if the problem can be isolated quickly and physically located on a map in order to find out which subscribers are affected by it.

Spatial views add a new perspective to the unique ingress control system in the CATVisor EMS. The ability to select the map area where ingress control is done makes

the process even more intuitive and further speeds up the process of locating and isolating the source of the ingress. Combined with the unique ingress monitoring and suppression features of the Teleste ACCcess series intelligent network products, EMS spatial ingress control provides additional help in improving data service quality and reliability.

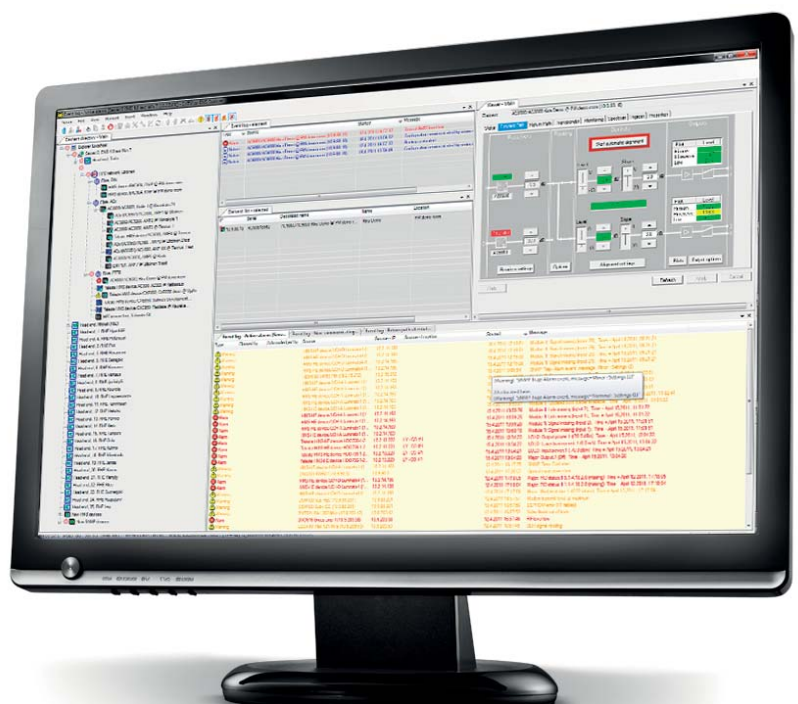
Focus on the essential

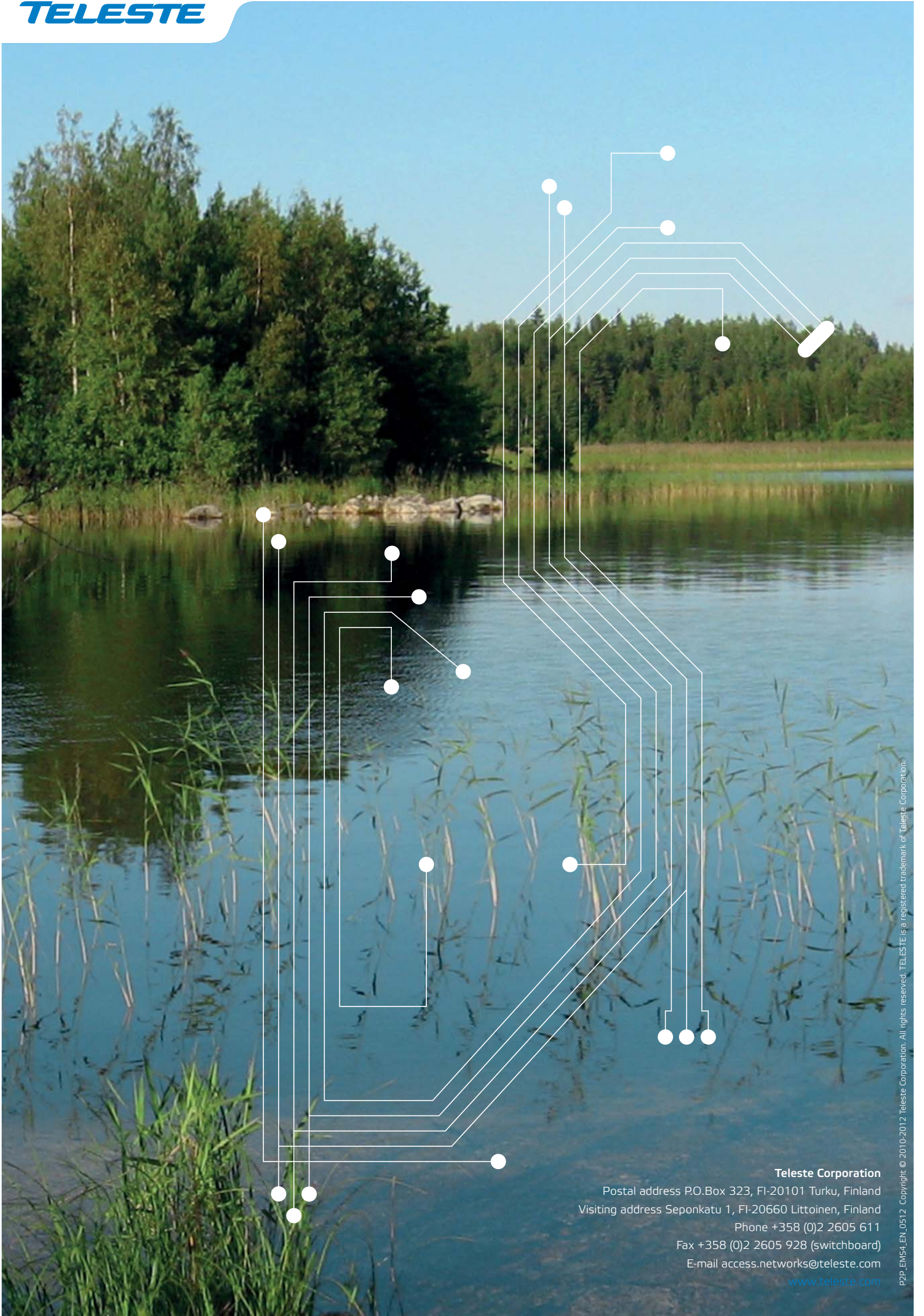
Being the European market leader in HFC networks gives us a perfect view to the feature demands of a network element system. The system needs to include a wide variety of features essential to HFC network management, and the importance of each feature varies between individual users. This sets dedicated requirements to the user interface in order to make it intuitive and easy to adopt – all reflecting an increase in efficiency.

The new CATVisor EMS 4 is designed especially for HFC network management. It comes with fully configurable views that can be tailored to include just the right information for each application, task and user. In practice, it means focusing on what is essential and serving each network management task in the best manner. All of this reflects positively on the ease of use and increased efficiency of the network.



Choose your perspective to the network





Teleste Corporation

Postal address P.O.Box 323, FI-20101 Turku, Finland
Visiting address Seponkatu 1, FI-20660 Littoinen, Finland

Phone +358 (0)2 2605 611

Fax +358 (0)2 2605 928 (switchboard)

E-mail access.networks@teleste.com

www.teleste.com