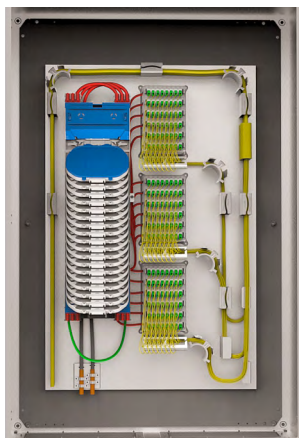


Optical passives

Point-of-Connection Platform **PoC**

Teleste tailor-make PoC solutions for operator's different network architectural needs. Our solutions are supplied within their own purpose designed metal enclosures or alternatively we fit into existing cabinets as required. Internal RF and/or optical equipment are supplied to support various node sizes.

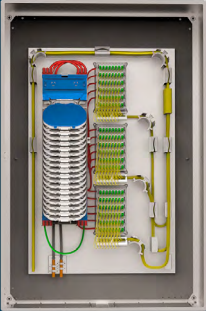



Designed for the following network architectures:

- Electrical Input to Electrical Output
- Optical Input to Electrical Output
- Electrical Input to Optical Output
- Optical Input to Optical Output

TELESTE

PoC / POINT-OF-CONNECTION PLATFORM

<p>Optical to Optical Fibre based networks with full passive PON connectivity.</p>			<p>Electrical to Optical Coaxial based networks with optical distribution to customers.</p>
<p>Optical to Electrical Optically fed with RF distribution to customers.</p>			<p>Electrical to Electrical Coaxial based networks fed via Coax and with RF distribution to customers.</p>

SPECIFICATION INDOOR /OUTDOOR CABINETS

Typically designed for up to 96 homes depending on size of lock box or street cabinet required. Backplate versions are available to fit into existing street cabinets if required.

PARAMETER	VALUE	PARAMETER	VALUE
Dimensions	Medium: 700mm (H) x 500 (W) x 210 (D) Large: 1000mm (H) x 800mm (W) x 300mm (D)	Cooling	Vented door
Material	Mild Steel enclosure alt. Galvanised Steel	Paint finish	RAL7035 (Painted inside & outside with UV 100% stable polyester paint)
Scalability	Serving up to 96 homes	Entry points	Cable funnel and brush entry
Mounting options	Wall hanging hooks and brackets	Backplate system	Separate internal backplate with options for cable management fingers

GENERAL INFORMATION AND ORDERING

PRODUCT	DESCRIPTION
Example: POC-A-B-C-D-1	A – Enclosure Type B – Base Build C – No. of Splice Trays D – No. of Splitter Trays 1 – Revision Number
Note:	Base Build typically consists of backplates, fibre management, duct entry management, RF splitter, active devices, power sockets & RCBO devices etc.

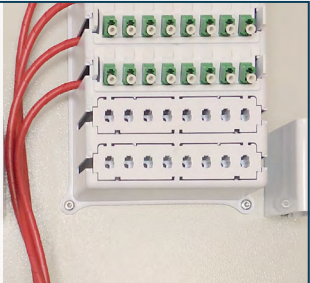
Splice
Easy to access and flexible configuration splice trays.

Organise
Optimal fibre cable management to prevent damage and ease installations.



Connect
Easy Modular flexible solutions for fibre presentation and ease of connection.

Secure
Entry solutions to ensure duct and fibre cable integrity and security.



TELESTE

TELESTE CORPORATION
www.teleste.com

PoC_170913

Copyright © 2017 Teleste Corporation. All rights reserved. Teleste and the Teleste logo are registered trademarks of Teleste Corporation. Other product and service marks are property of their respective owners.

Teleste reserves the right to make changes to any features and specifications of the products without prior notice. Although the information in this document has been reproduced in good faith, the contents of this document are provided "as is". Teleste makes no warranties of any kind in relation to the accuracy, reliability or contents of this document, except as required by applicable law.