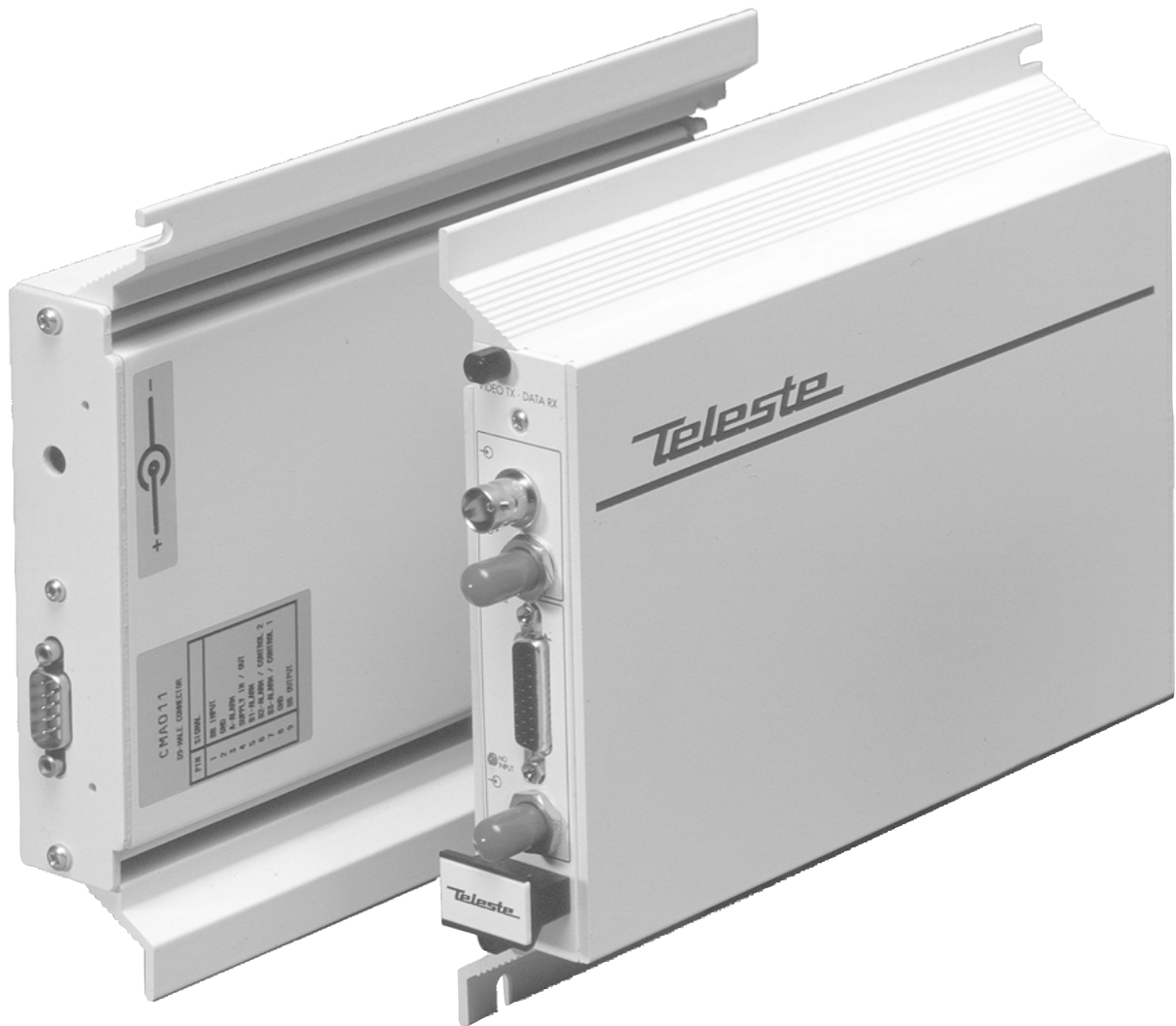
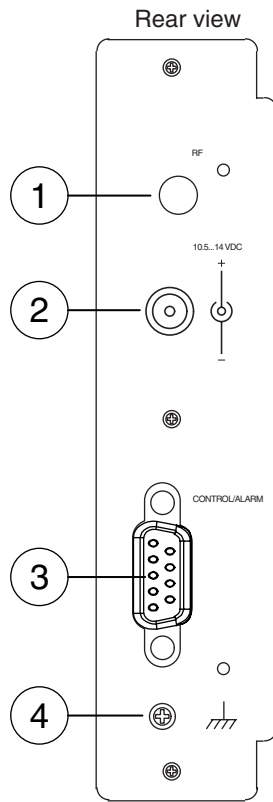


User Manual



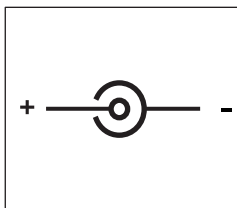
Module Adapters CMA011 & 012

MODULE ADAPTERS CMA011/012



Picture 1.

- CMA01x** Module Adapter
- 1) RF connectors, only in CMA012 (SMA).
 - 2) Supply voltage connector.
 - 3) Control / alarm interface connector (D male).
 - 4) Grounding connection.



Picture 2.

CMA01x DC connection polarity.

GENERAL

The **CMA011/012** module adapter is intended for standalone installation of one 5HP wide CFO series unit.

The **CMA012** is module adapter version having **RF** connector on rear side of unit and is intended for use with **CFO700** wideband products.

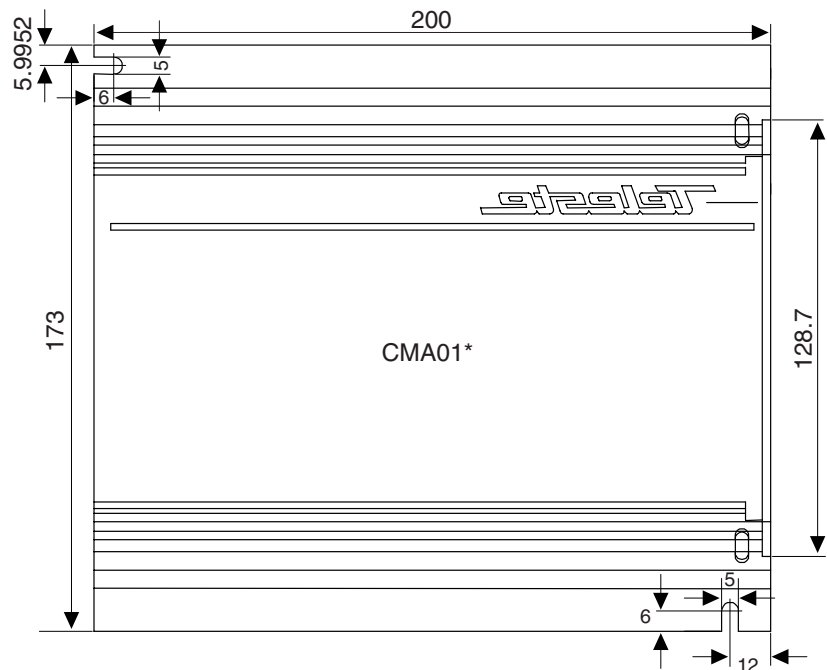
INSTALLATION

The module adapter is to be mounted to a vertical installation surface by the means of two screws. The slot for the CFO plug-in unit should point to the left. Installation location must be in a dry indoor environment.

To insert a CFO plug-in unit into the module adapter, push the unit along the guide rails into module until the unit is firmly attached. Secure the plug-in unit with the upper and lower locking screws.

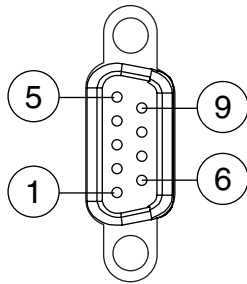
SUPPLY VOLTAGE

The supply voltage for **CMA011/012** should be supplied by a **CPS22x** mains adapter (12V DC, 2.4A). The DC socket (2.1 mm) is supplied with the **CPS22x**.



Picture 3.

CMA01x module adapter's dimensions.



Picture 4.
The D9 male connector's pin order.

REAR PANEL CONNECTORS

The CFO unit's alarm signals can be obtained from the D9 male connector (see picture 4) at the rear of the module adapter according to the table 1 below. The connector also has pins for a baseband input and output, which can be used for subcarrier operations in CFO200 and CFO500 series units.

Supply voltage (+ 12 V DC and ground) is feeded trough sepeate power connector (DC-socket 2.1 mm, see picture 2).

Pin	Signal
1	Baseband in
2	Ground
3	A-alarm
4	+ 12 V DC output
5	B1-alarm
6	B2-alarm / control 2
7	B3-alarm / control 1
8	Ground
9	Baseband out

Table 1.
CMA01x module adapter's D9 male connector's pinout.

Copyright Acknowledgements

Information in this document is subject to change without notice and does not represent a commitment on the part of Teleste Corporation.

Copyright © 1998 - 2002 Teleste Corporation. All Rights Reserved.

No part of this document may be reproduced, transmitted, stored in a retrieval system, or translated into any other language without the express permission of Teleste Corporation.

Teleste Corporation
Video Networks
P.O. Box 323
FIN-20101 Turku
FINLAND
www.teleste.com/cctv