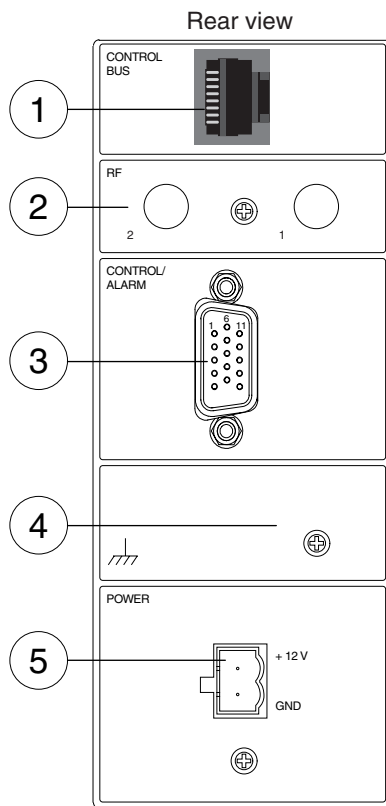


User Manual



Module Adapters CMA02x & 03x

MODULE ADAPTERS CMA021/022/031/032



GENERAL

The **CMA02x/03x** is intended for standalone installations of 10HP (**CMA02x**) or 15HP (**CMA03x**) wide CFO series units. It can be used also for installation of two 5HP (**CMA02x**) or three 5HP (**CMA03x**) wide CFO units. The **CMA022/032** are adapter versions having **RF** connectors on rear side of unit and which are meant for limited **CFO700** installations.

INSTALLATION

The module adapter is to be mounted to a vertical installation surface by the means of two screws. The slot for the CFO plug-in unit should point to the left. Installation location must be in a dry indoor environment.

To insert a CFO plug-in unit into the module adapter, push the unit along the guide rails into module until the unit is firmly attached. Secure the plug-in unit with the upper and lower locking screws.

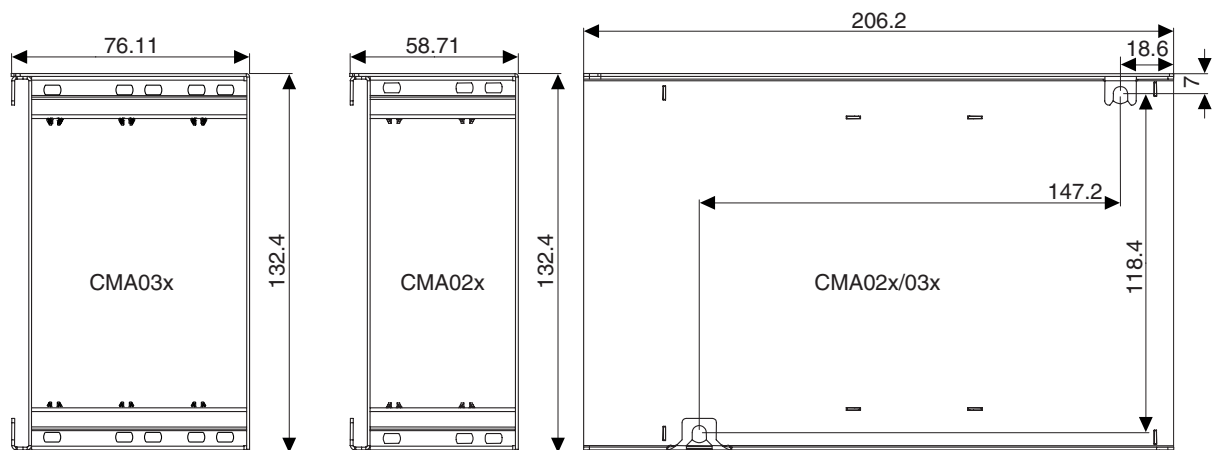
SUPPLY VOLTAGE

The supply voltage for **CMA02x/03x** should be supplied by a **CPS23x** mains adapter (12V DC, 1.5A). The DC socket (2-pin removable screw) is supplied with the CMA module adapter. See instructions provided with **CPS23x** to connect the DC wires with correct polarity.

Picture 1.

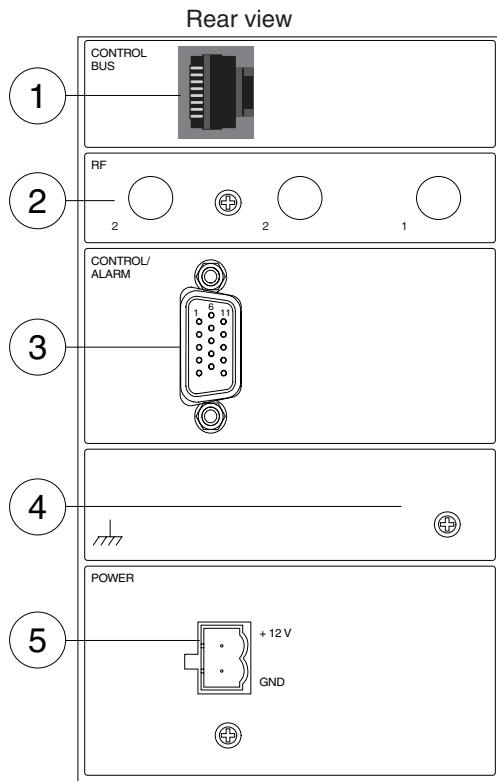
CMA02x Module Adapter

- 1) Control bus for management systems (RJ-45 female), for future applications.
- 2) RF connectors, only in CMA022 (SMA).
- 3) Control / alarm interface connector (HD15 female).
- 4) Grounding connection.
- 5) Supply voltage connector.



Picture 2.

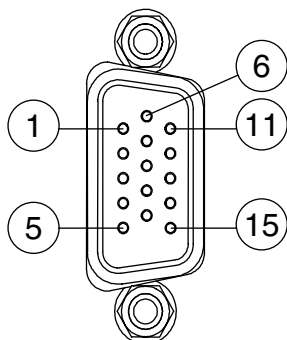
CMA02x & 03x module adapter's dimensions.



Picture 3.

CMA03x Module Adapter

- 1) Control bus for management systems (RJ-45 female), for future applications.
- 2) RF connectors, only in CMA032 (SMA).
- 3) Control / alarm interface connector (HD15 female).
- 4) Grounding connection.
- 5) Supply voltage connector.



Picture 4.

The HD15 female connector's pin order.

REAR PANEL CONNECTORS

The CFO unit's alarm signals can be obtained from the HD15 female connector (see picture 4) at the rear of the module adapter according to the table 1 below.

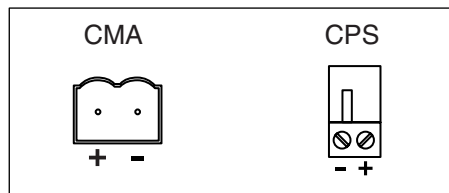
Supply voltage (+ 12 V DC and ground) is feeded trough sepeate power connector (see picture 5). Also Management bus uses separate control bus connector (RJ-45 female).

Pin	Signal
1	A-alarm (slot 2)
2	B-alarm (slot 2)
3	CTRL1 (CFO address bus data, slot 2)
4	CTRL2 (CFO address bus clk, slot 2)
5	+ 12 V DC output
6	A-alarm (slot 1)
7	B-alarm (slot 1)
8	CTRL1 (CFO address bus data, slot 1)
9	CTRL1 (CFO address bus clk, slot 1)
10	No connection
11	A-alarm (slot 3)
12	B-alarm (slot 3)
13	CTRL1 (CFO address bus data, slot 3)
14	CTRL1 (CFO address bus clk, slot 3)
15	Ground

Table 1.

CMA02x/03x module adapter's HD15 female connector's pinout.

*Note! In **CMA02x** module adapter the pins from 11 to 15 are not in use.*



Picture 5.

CMA02x/03x DC connection polarity.

Copyright Acknowledgements

Information in this document is subject to change without notice and does not represent a commitment on the part of Teleste Corporation.

Copyright © 1998 - 2002 Teleste Corporation. All Rights Reserved.

No part of this document may be reproduced, transmitted, stored in a retrieval system, or translated into any other language without the express permission of Teleste Corporation.

Teleste Corporation
Video Networks
P.O. Box 323
FIN-20101 Turku
FINLAND
www.teleste.com/cctv