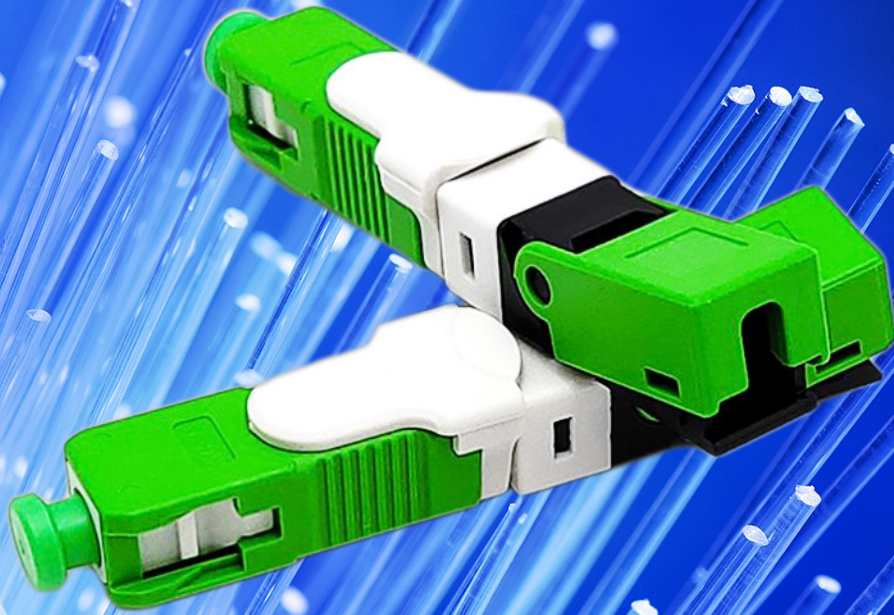


LET US
enlighten
YOUR FIBRE
NETWORKS



Field Installable FICS Connector Series - SC/APC SC/UPC

enlighten Fibre FICS Connector

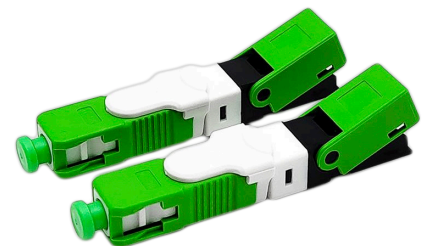
The Fibre FICS Connector is specifically designed for ease of field installation, the series includes factory pre-polished SC/UPC and SC/APC models, compatible with standard SC connectors. The series is designed using a solid and proven mechanical splice technology, ensuring precision fiber alignment and low loss termination.

Features

- Field-installable and highly reliable solution
- Easy fitted in less than 1 minute
- Quick and easy assembly using standard tools
- Precision mechanical alignment
- Factory-polished ferrule

Applications

- Large-scale FTTx deployment
- Data Centers



TELESTE

Quick, Reliable and so Simple

TRUE INSTALLATION EFFICIENCY

Our series of field installable connectors provide excellent performance for digital transmission networks, utilising a high-precision mechanical splice technology that offers exceptional IL and RL values and long-term stability of optical characteristics.



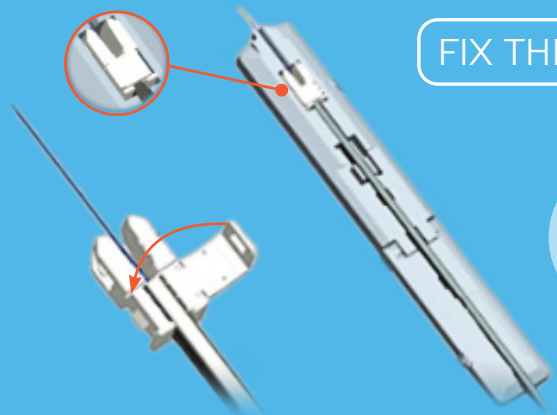
Insert the fibre into the guide port

FIBRE PREPARATION

1

- Strip the cable using a standard Cable Stripper
- Inspect and clean the fibre
- Place and align the cable into the Cutting Jig

FOLLOW FOUR



FIX THE FIBRE CABLE

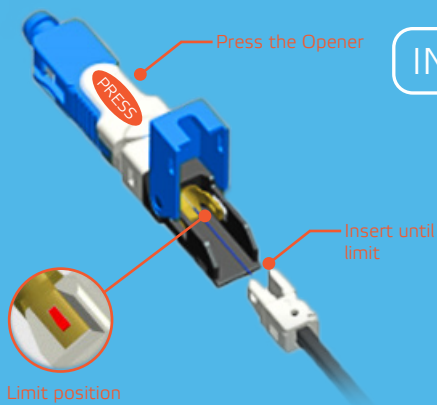
2

- Fix the cable in the FICS Connector Cable Holder *
- Place the Cutting Jig in a standard Fibre Cleaver
- Cut the bare fibre *

** Additional information at page 4*

The FICS Connector features a quick assembly design that is carried out in less than a minute.

This greatly reduces on-site labour costs, and makes the installation efficient and pragmatic, since the assembly is done using standard tools that don't require any electrical power. The approach reduces the upfront investment considering there is no need for each field technician to include a Fusion Splicer in their tool-kit.

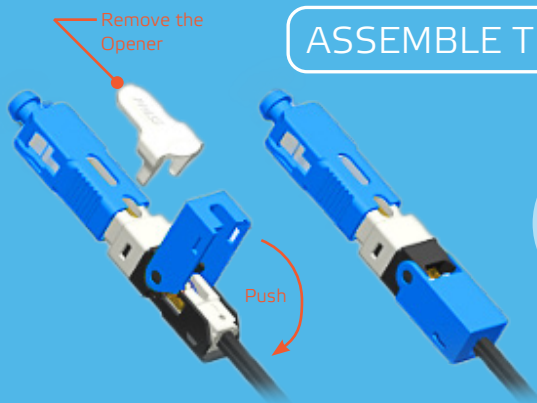


INSERT THE FIBRE

3

- Press open the FICS Connector Opener
- Insert the fibre into the FICS Connector tail until the limit

EASY STEPS



ASSEMBLE THE FAST CONNECTOR

4

- Push down the FICS Connector cover
- Remove the FICS Connector opener
- Complete the assembly

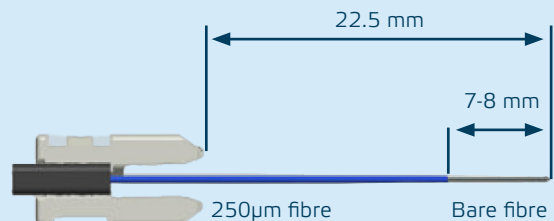
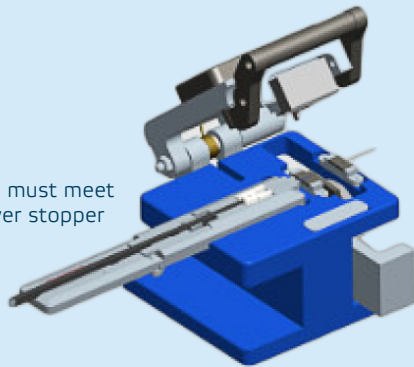
enlighten OPTICAL PASSIVES / FIELD INSTALLABLE FICS CONNECTOR SERIES

OPTICAL SPECIFICATIONS			
Fibre type	Singlemode	Mechanical splice	Index matching gel
Insertion Loss (Typ. dB)	UPC: ≤ 0.30 APC: ≤ 0.30	Return Loss (Typ. dB)	UPC: ≤ -45 APC: ≤ -50
Reusable Times	10	Tensile Strength	5 N
Tighten Strength of Coating	10 N	On-Line Tensile Strength Test (20 N)	IL ≤ 0.50 dB
Mechanical Durability (after 500 matings)	IL ≤ 0.50 dB	Impact (dropped from 4m, 3 times)	IL ≤ 0.50 dB
Dimension	52 x 6 mm	Operating Temperature	-40 to + 85 °C

ADDITIONAL DETAILS

CUT THE BARE FIBRE

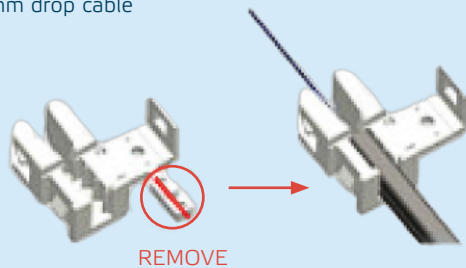
The cutting jig must meet the fibre cleaver stopper



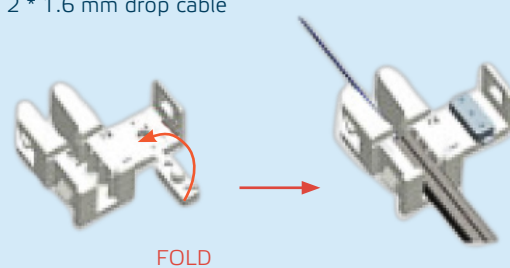
Picture serves only as a reference

CABLE HOLDER

2 * 3.0 mm drop cable



2 * 1.6 mm drop cable



ORDERING INFORMATION

P/N	DESCRIPTION
TEN-FICS-SCA-E	Field installable connector SC/APC single mode E version
TEN-FICS-SCU-E	Field installable connector SC/UPC single mode E version

TELESTE

TELESTE CORPORATION
www.teleste.com

TEN-FICS Fibre Connector_211124

Copyright © 2021 Teleste Corporation. All rights reserved. Teleste and the Teleste logo are registered trademarks of Teleste Corporation. Other product and service marks are property of their respective owners.

Teleste reserves the right to make changes to any features and specifications of the products without prior notice. Although the information in this document has been reproduced in good faith, the contents of this document are provided "as is". Teleste makes no warranties of any kind in relation to the accuracy, reliability or contents of this document, except as required by applicable law.