

LET US
enlighten
YOUR FIBRE
NETWORKS



Fibre Outlet Series - TEN-FW06, 2F SC/LC

enlighten FTTH WALL OUTLET - TEN-FW06

This FTTH Wall Outlet is designed to accommodate the termination of installation cables to pigtails and provides an interface between the network and the customer device, it is specifically designed for Din Rail mounting and is particularly suitable for installation in service and riser cupboards of buildings.

Features

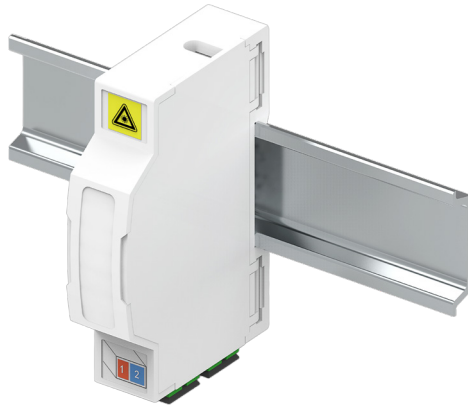
- Fits alongside other similar devices that use standard DIN rail mounting solutions.
- Hinged protective lid, providing easy access to the panel.
- Extremely compact and clever design that provides swift and easy installation.
- Accommodates two optical adapters and comes with colour coded optical access ports.
- Delivered empty or with adaptor(s) and/or with pigtail(s) in a suitable box.

TELESTE

enlighten OPTICAL PASSIVES / FTTH OUTLET SERIES

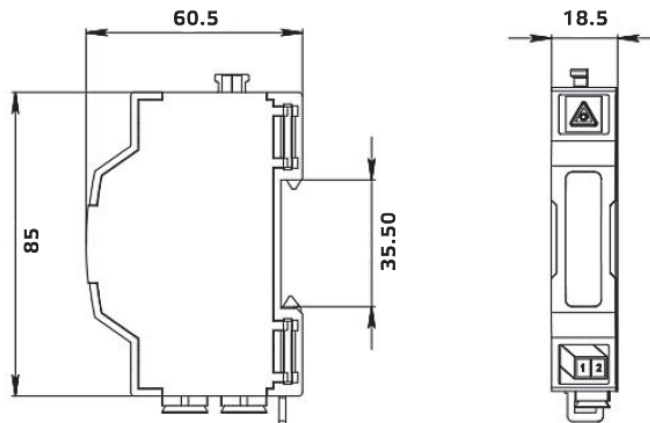
GENERAL			
Dimension (LxWxH)	85 x 60.58 x 18.5 mm	Weight	35 g
Material	ABS + PC	Supported adaptors	SC, LC
Operating temperature	-40 - +85 °C	Colour	White (RAL9010)

MOUNTING



FWO6 supports both wall and DIN rail mounting

MECHANICAL LAYOUT



ORDERING INFORMATION

P/N	DESCRIPTION
TEN-FWO6-0	FTTH Wall Outlet 6 DIN rail without Adapters or Pigtails
TEN-FWO6-1SCA0	FTTH Wall Outlet 6 DIN rail with 1 piece SC/APC Adapter and no Pigtails
TEN-FWO6-2SCA0	FTTH Wall Outlet 6 DIN rail with 2 pieces SC/APC Adapter and no Pigtails



TELESTE CORPORATION

www.teleste.com

Enlighten FTTH Outlet Series TEN-FWO6_200617

Copyright © 2020 Teleste Corporation. All rights reserved. Teleste and the Teleste logo are registered trademarks of Teleste Corporation. Other product and service marks are property of their respective owners.

Teleste reserves the right to make changes to any features and specifications of the products without prior notice. Although the information in this document has been reproduced in good faith, the contents of this document are provided "as is". Teleste makes no warranties of any kind in relation to the accuracy, reliability or contents of this document, except as required by applicable law.