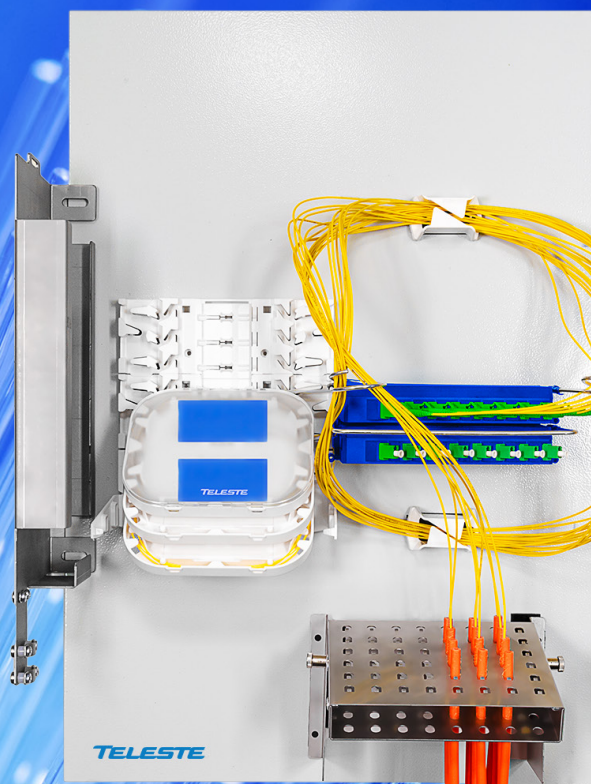


LET US
enlighten
YOUR FIBRE
NETWORKS



Pre-assembled Network Solutions - PoC

enlighten Point-of-Connection Platform

Teleste tailor-make PoC solutions for operators different network architectural needs.

Our solutions are supplied within their own purpose designed enclosures or alternatively we fit into existing cabinets as required. Internal RF and/or optical equipment are supplied to support various node sizes.

Designed for the following network architectures:

- Electrical Input to Electrical Output
- Optical Input to Electrical Output
- Electrical Input to Optical Output
- Optical Input to Optical Output

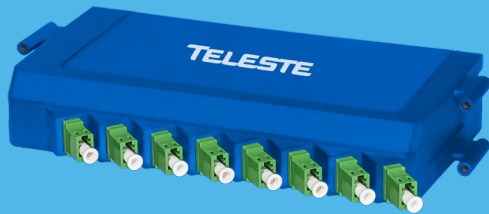


TELESTE

PoC TRUE CUSTOMISATION POWER

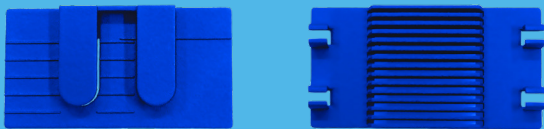
Teleste pre-assembled solutions provide operators with cost effective faster network roll-outs with improved quality and less problems compared to field installations.

Our customization solutions have over the last 65 years proven to provide increasing efficiency, reducing complexity and ensuring maximum optimization - we develop high quality products with care and detail in design, build, QA and shipping processes.



Connect

Modular and flexible solutions for fibre presentation and ease of connection



Splice

Easy to access and flexible configuration splice and splitter holders



Secure

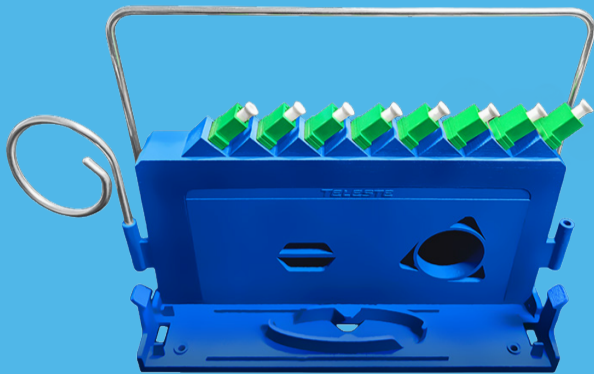
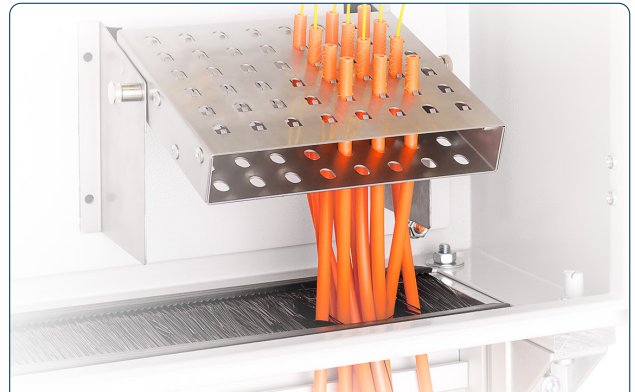
Duct entry solutions to ensure duct and fibre cable integrity and security

FLEXIBILITY and...

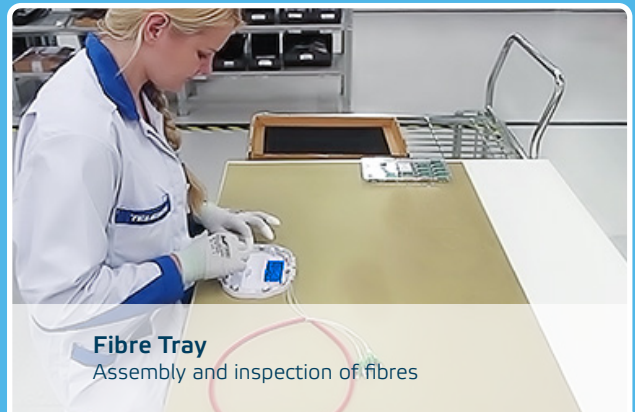


PoC pre-assembled options include:

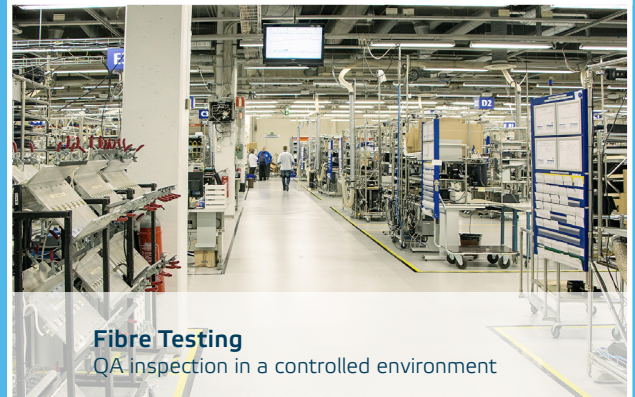
- Splice and Splitter Trays
- Flexible Fibre Connectivity and Presentation
- Robust Duct and Cable Management
- Various Fibre Organisers
- RF Splitters and Taps
- RF Amplifiers
- RF Patch Panels



PREMIUM quality



Fibre Tray
Assembly and inspection of fibres



Fibre Testing
QA inspection in a controlled environment



Assembly
Preparation for backplate and cabinet assembly

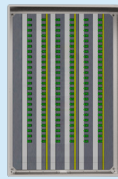
enlighten PoC / PRE-ASSEMBLED NETWORK SOLUTIONS

ENCLOSURE SPECIFICATION - TELESTE CABINET A

Typically designed for up to 96 homes depending on size of lock box or street cabinet required. Backplate versions are available to fit into existing street cabinets if required.

PARAMETER	VALUE	PARAMETER	VALUE
Enclosure Dimension	850 mm (H) x 590 (W) x 320 (D)	Plinth dimension	900 mm (H) x 590 (W) x 310 (D)
Overall dimension	1750 mm (H) x 590 (W) x 320 (D)	Material	Polyester reinforced with fibreglass
Colour	Grey RAL 7035	Scalability	Serving up to 96 homes
Standards	IEC 62208	IK degree of protection	IK10 plain door conforming to IEC 62262
IP degree of protection	IP43 : plinth type open bottom conforming to IEC 60529 IP54 : with additional sealing kit conforming to IEC 60529		
Fire resistance	960 °C conforming to IEC 62208	Ambient air temperature for storage	-35 - 90 °C

CONNECTOR ARRAY PANEL



Description

For solutions requiring higher ODF port counts or where multiple patching between ODF ports is required, we have available a Connector Panel. This connector panel is designed as a single piece door which is hinged at one side. The Connector Panel sits recessed within the enclosure in front of the splice trays which are mounted on the backboard.

PoC CONFIGURATION MAP

	1	2	3	
PoC	1 2 A F	1 2 3 4 H A C B	1 A	Configuration Example: PoC A F - H A C B - A PoC having optical customer interface and optical network interface, built onto a backboard to fit a customer specific cabinet, 64-way, 4-way optical splitter, with 3 splice trays with CCP on right of splice trays, solution revision A.

PoC CONFIGURATION OPTIONS

1-1 PoC Type A Customer Interface Optical & Network Interface Optical B Customer Interface RF & Network Interface Optical C Customer Interface Optical & Network Interface RF D Customer Interface RF & Network Interface RF	1-2 Cabinet + Plinths + Backboard (if applicable) A Teleste Lockbox Medium B Teleste Lockbox Large C Teleste Cabinet A (1650mm H x 300mm D x 595mm W) D Sichert Uni8 Street Cabinet (998mm H x 400mm D x 310mm W) E Sichert Uni8 Backplate (populated) F Customer backboard size xxxx
2-1 Number of Outputs A 8 E 40 I 72 M 104 Q 136 B 16 F 48 J 80 N 112 R 144 C 24 G 56 K 88 O 120 X None D 32 H 64 L 96 P 128	2-2 Splitter type used in Cabinet A 1-4 E 1-32 B 1-8 F 1-64 C 1-16 X None D 2-way RF
2-3 Number of Splice Trays A 1 E 5 I 48 B 2 F 6 X None C 3 G 12 D 4 H 24	2-4 Building direction, CCP on: A Left B Right C Top X None
3-1 Revision A Solution revision A	



TELESTE CORPORATION
www.teleste.com

PoC_210226

Copyright © 2021 Teleste Corporation. All rights reserved. Teleste and the Teleste logo are registered trademarks of Teleste Corporation. Other product and service marks are property of their respective owners.

Teleste reserves the right to make changes to any features and specifications of the products without prior notice. Although the information in this document has been reproduced in good faith, the contents of this document are provided "as is". Teleste makes no warranties of any kind in relation to the accuracy, reliability or contents of this document, except as required by applicable law.