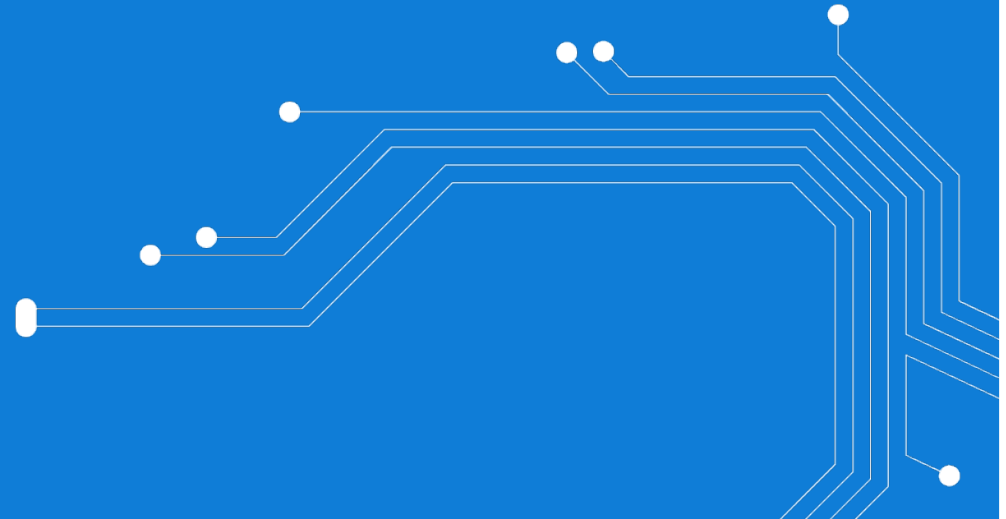


# Teleste Corporation Annual General Meeting 2011

The biographical details of member candidates



# Pertti Ervi

B.Sc. (Eng.), born in 1957

***Board membership:***

Member of the Board since 2009  
Independent of Teleste and its significant shareholders

***Principal occupation:***

Independent Consultant

***Primary working experience:***

Computer 2000, Co-President until 2000  
Computer 2000 Finland Oy, MD until 1995

***Other elected positions of trust:***

Aldata Solution Oyj, Member of the Board 2010 -  
Efecte Oy, Member of the Board 2009 - , Chairman of the Board 2011 -  
Forte Netservices/Groupservices Oy, Member of the Board 2000 -  
F-Secure Corporation, Member of the Board 2003 - , Chairman of the Audit  
Committee 2006 -  
Inventure Oy, Chairman of the Board 2005 -  
Ixonos Plc, Vice Chairman on the Board and Chairman of the Audit  
Committee 2009 -  
Nevtor Oy, Chairman of the Board 2008 -  
OpusCapita Oy, Member of the Board 2010 -

Own share holding: 4 638 Teleste shares



## Tero Laaksonen

M.Sc.(Math.), born in 1946

### ***Board membership***

Member of the Board since 1999

Independent of Teleste and its significant shareholders

### ***Principal occupation:***

Professional Board Member

### ***Primary working experience:***

Comptel Corporation, CEO 2002-2004

Telia Finland Oy, CEO 1998-2001

Nokia Telecommunication Oy, SVP 1995-1998

### ***Other elected positions of trust:***

Ixonos Plc, Chairman of the Board 2005 -

Tieto-X Plc, Member of the Board 2004-2005

Own share holding: 27 790 Teleste shares



# Pertti Raatikainen

Dr. Sc. (Technology), born in 1956

**Board membership:**

Member of the Board since 2003 -  
Independent of Teleste and its significant shareholders

**Principal occupation:**

VTT ICT, Director Technology 2009 -

**Primary working experience:**

VTT Information Technology, Research professor, 1998 - 2008  
Helsinki University of Technology, Docent 2002 -  
University of Jyväskylä, Docent 1998 -  
Helsinki University of Technology, Professor (fixed term) 1997

Own share holding: 12 181 Teleste shares



# Marjo Miettinen

M.Sc. (Ed.), born in 1957

***Board membership:***

Chairman of the Board since 2009

EM Group Oy is a significant shareholder of Teleste

***Principal occupation:***

EM Group Oy, CEO 2006 -

***Primary working experience:***

Ensto Oy, Chairman of the Board 2002-2006

Ensto Oy, managerial positions 1989-2001

***Other elected positions of trust:***

Componenta Corporation, Member of the Board 2004 –

Efla Oy, Chairman of the Board 2007 -

EM Group Oy, Member of the Board 2005 -

Ensto Oy, Member of the Board 2002 -

Technology Industries of Finland, Member of the Board 2007 -

Own share holding: 7 421 Teleste shares

EM Group Oy share holding: 3 822 813 i.e. 21,02 % of share capital and voting rights.



# Kai Telanne

M.Sc. (Econ.), born in 1964

**Board membership:**

Board Member since 2008

Independent of Teleste and its significant shareholders

**Principal occupation:**

Alma Media Corporation, CEO 2005 -

**Primary working experience:**

Kustannus Oy Aamulehti, Managing Director 2001-2005

Kustannus Oy Aamulehti, Deputy MD 2000-2001

**Other elected positions of trust:**

Confederation of Finnish Industries, Member of the Board 2010 -

Federation of the Finnish Media Industry, Chairman of the Board 2007 -

The Central Chamber of Commerce of Finland, Member of the Board 2007-

The Finnish News Agency (STT), Member of the Board 2008 -

Talentum Oyj, Deputy Chairman 2010 -

Tampereen Lääkärikeskus Oy (Tampere Private Clinic), Member of the Board 2009

Varma Mutual Pension Insurance Company, Member of the Board 2009-

Own share holding: 6 457 Teleste shares



# Petteri Walldén

M.Sc. (Eng.), born in 1948

***Board membership:***

Member of the Board since 2009  
Independent of Teleste and its significant shareholders

***Principal occupation:***

M.Sc. (Eng.)

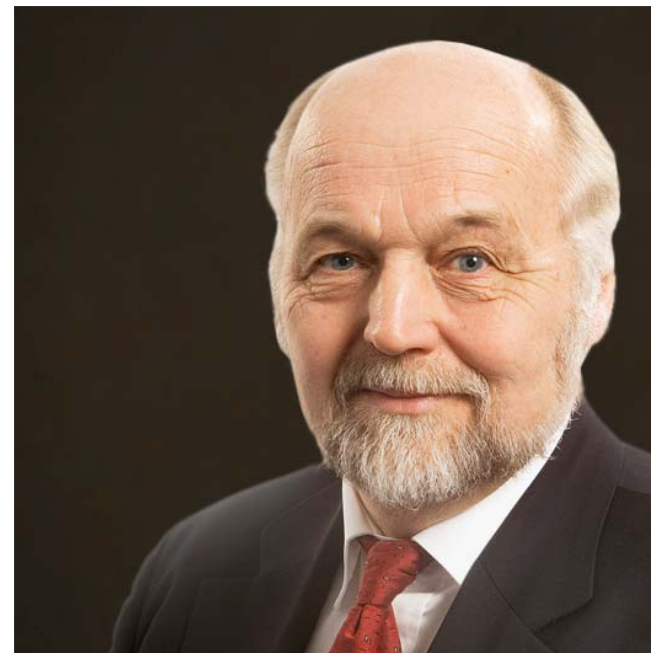
***Primary working experience:***

Alteams Oy, CEO 2007-1/2010  
Onninen Oy, CEO 2001-2005  
Ensto Oy, CEO 1996-2001  
Nokia Kaapeli Oy, CEO 1990-1996  
Sako Oy, CEO 1987-1990

***Other elected positions of trust:***

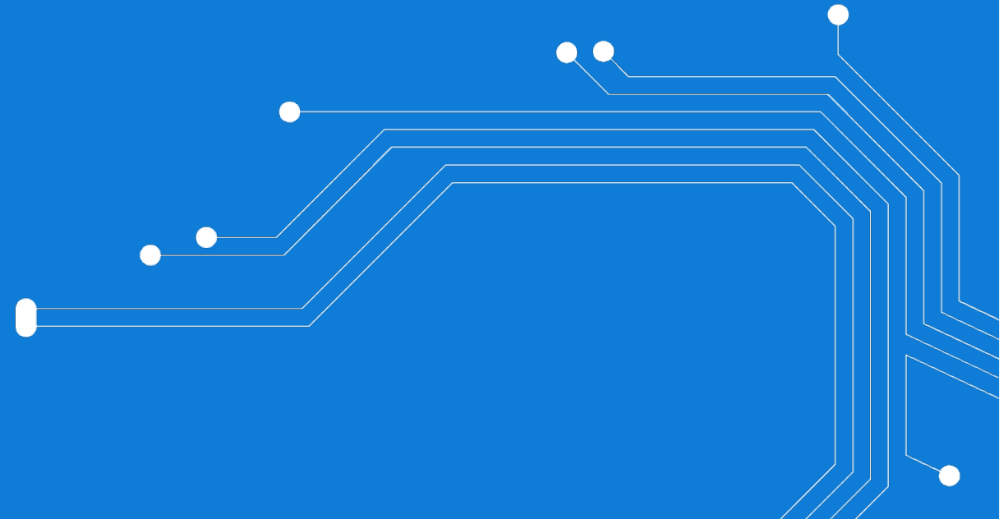
Comptel Corporation, Member of the Board 2009 -  
Empower Oy, Member of the Board 2007 -  
eQ Bank Ltd, Member of the Board 2005 -  
Kuusakoski Group Oy, Member of the Board 2007 -  
Nokia Tyres plc, Chairman of the Board 2006 -  
Tikkurila Oy, Member of the Board 2008 -

Own share holding: 4 638 Teleste shares



# Teleste Corporation Annual General Meeting 2011

Auditor candidate





# Esa Kailiala

M.Sc. (Econ.), born in 1961

***Principal occupation:***

Authorized Public Accountant since 1991  
Teleste's principal auditor since 2009

***Primary working experience:***

KPMG OY AB since 1985 - ,

No holdings of Teleste shares

