

LET US  
enlighten  
YOUR FIBRE  
NETWORKS

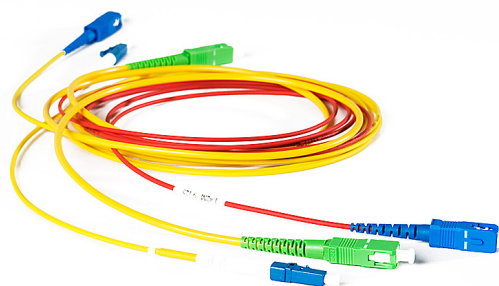
Patchcords and Pigtailed - Simplex/Duplex

# enlighten PATCHCORDS and PIGTAILS

Teleste supplies various kinds of fibre optic patchcords in simplex and duplex structures. We have available standard and premium performance models typically G652A1/A2 fibre with cable diameter of 2 mm, in LSZH yellow jackets. We can also support your needs for other custom assemblies.

## Features

- Available in Grades Premium, Standard and Custom
- Low insertion and return loss
- The series includes highly reliable products that are temperature stabilised and having excellent precision alignment
- Wide range of connector and optical fibre combinations available
- Aramid yarn strength member
- RoHS compliant



**TELESTE**

# enlighten OPTICAL PASSIVES / PATCHCORDS AND PIGTAILS

OPTICAL SPECIFICATIONS			
	Connector	Standard Grade	Premium Grade
<b>Insertion Loss</b> IL avg/typ. Acc. to IEC 61300-3-4	SC APC/UPC LC APC/UPC	≤0.25dB ≤0.25dB	≤0.12dB ≤0.12dB
<b>Insertion Loss</b> ILmax against master 100% of samples. Acc. to IEC 61300-3-4	SC APC/UPC LC APC/UPC	≤0.30dB ≤0.30dB	≤0.15dB ≤0.15dB
<b>Insertion Loss</b> ILmax random mating 97% of samples Acc. IEC 61300-3-4	SC APC/UPC LC APC/UPC	≤0.50dB ≤0.50dB	≤0.25dB ≤0.25dB
<b>IEC Grade</b>		Grade C	Grade B
<b>Return Loss</b> Acc. to IEC 61300-3-6	UPC (SC+LC) APC (SC+LC)	≥50 dB ≥60 dB	≥55 dB ≥65 dB
<b>Flammability</b>	Connector housing: high quality plastic, resistant to corrosion and high temperature with UL 94-V0 flammability index or high quality metal resistant to corrosion.		
<b>Pull Test</b> Acc. IEC 61300-2-4	0.9mm – 5N 2.0mm – 70N 3.0mm – 100N	<b>Durability</b> According to IEC 61300-2-2	Min. 500 times
<b>Bending Radius</b>	G.657.A1 G.657.A2 and G.657.B2 G.657.B3	10 mm 7.5 mm 5 mm	
<b>Ferrule Material</b>	Ceramic Zirconia	<b>Connector</b>	APC = Green, UPC = Blue
<b>Operating Temperature</b>	All models	-25 to +70 C°	-40 to +85 C°

Note: Teleste patchcords can meet Telcordia GR326 and IEC 61300-2

CONFIGURATION MAP			
	1	2	3
	1 2 3 4 5	1 2 3 4	1
TEN -	0 1 2 6 S	L 9 T Y	- 1
	<b>Configuration Example</b>		
	TEN-0122S-L2TY-2		
	Pigtail, Standard SC/APC, G652D, Simplex, LSZH, 2.0mm, Tight buffer, Yellow, 1m		

CONFIGURATION OPTIONS									
1-1 Connector #1		1-2 Connector #2		1-3 Glass Grade		1-4 Fibre Type		1-5 Count	
0	Pigtail	1	SC/APC	1	Premium	1	Corning SMF-28 Ultra (D/A1)	S	Simplex
1	SC/APC	1	SC/APC	2	Standard	2	Corning ClearCurve LBL (A2/B2)	D	Duplex
2	SC/UPC	2	SC/UPC	3	Custom	3	Corning ClearCurve ZBL (G.657.B3)		
3	LC/APC	3	LC/APC			4	Teleste standard G.657A1		
4	LC/UPC	4	LC/UPC			5	Teleste standard G.657A2		
						6	Teleste standard G.652D		
2-1 Jacket Type		2-2 Diameter		2-3 Cable Structure		2-4 Colour		3-1 Length (m)	
P	PVC	9	0.9 mm	T	Tight buffer (0.9mm only)	Y	Yellow	1	20
L	LSZH	2	2.0 mm	L	Loose tube (0.9mm only)	B	Blue	2	25
		3	3.0 mm	2	Semi tight buffer	W	White	3	30
				S	Standard	R	Red	5	35
						G	Green	10	40
						8	Black	15	45



TELESTE CORPORATION  
www.teleste.com

Enlighten Patchcords and Pigtails\_220208

Copyright © 2022 Teleste Corporation. All rights reserved. Teleste and the Teleste logo are registered trademarks of Teleste Corporation. Other product and service marks are property of their respective owners. Teleste reserves the right to make changes to any features and specifications of the products without prior notice. Although the information in this document has been reproduced in good faith, the contents of this document are provided "as is". Teleste makes no warranties of any kind in relation to the accuracy, reliability or contents of this document, except as required by applicable law.