



[Learn more...](#)

Indoor RF passives

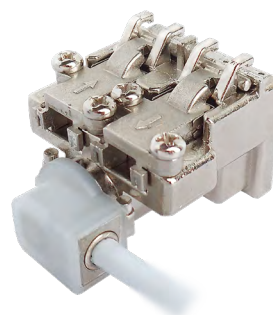
## Isolated Clamp Outlet and Accessories **API-S**

The API is a unique small single galvanic interface for next generation wall outlets. It incorporates our award winning Clamp technology to provide input and output connections, with a separate cover for the coax cable and a galvanic isolated output with preinstalled mini coax and an angled female f-connector. This interface is small to allow easy fitting inside the frame/electrical wall box.

### API-S series features

- Frequency range 5-1218 MHz
- Class A screening effectiveness
- Outstanding RF performance

One of Teleste's unique and award winning superior performance passives designed for easy installation and reliability.



**TELESTE**

## INDOOR RF PASSIVES / API-S SERIES

ELECTRICAL SPECIFICATIONS					
	API-S-104-25-IM	API-S-108-25-IM	API-S-110-25-IM	API-S-112-25-IM	API-S-115-25-IM
<b>INSERTION LOSS (dB, Max.) - IN TO OUT</b>					
Frequency (MHz)					
5 - 10	3.6 ± 0.5	1.7 ± 0.5	1.0 ± 0.5	0.9 ± 0.5	0.7 ± 0.5
10 - 470	3.5 ± 0.5	1.6 ± 0.5	0.9 ± 0.5	0.8 ± 0.5	0.7 ± 0.5
470 - 862	3.6 ± 0.5	1.7 ± 0.5	1.3 ± 0.5	1.0 ± 0.5	1.0 ± 0.5
862 - 1006	3.8 ± 0.5	1.9 ± 0.5	1.4 ± 0.5	1.3 ± 0.5	1.2 ± 0.5
1006 - 1218	4.1 ± 0.7	2.1 ± 0.7	1.6 ± 0.7	1.4 ± 0.7	1.3 ± 0.7
<b>INSERTION LOSS (dB, Max.) - IN TO TAP</b>					
5 - 10	3.7 ± 0.5	8.0 ± 1.2	10.0 ± 1.2	12.0 ± 1.2	15.0 ± 1.2
10 - 1006	4.0 ± 1.0	8.0 ± 1.0	10.0 ± 1.0	12.0 ± 1.0	15.0 ± 1.0
1006 - 1218	4.4 ± 1.2	8.0 ± 1.2	10.0 ± 1.2	12.0 ± 1.2	15.0 ± 1.2
<b>ISOLATION (dB, Min.) - OUT TO TAP</b>					
5 - 40	20.0	20.0	22.0	22.0	26.0
40 - 470	24.0	24.0	26.0	26.0	30.0
470 - 1006	20.0	20.0	22.0	22.0	26.0
1006 - 1218	18.0	18.0	20.0	20.0	23.0
<b>RETURN LOSS <sup>(1)</sup> (dB, Min.)</b>					
5 - 40			18.0		
40 - 1218			18.0		
<b>GENERAL SPECIFICATIONS</b>					
<b>Frequency range</b>	5 – 1218 MHz		<b>Nominal impedance</b>	75 Ohm	
<b>Connections</b>	Input/Output Tap		Cable clamp IEC male connector		
<b>Electromagnetic comp. <sup>(2)</sup></b> (dB, Min.)	5 - 300 300 - 470 470 - 1006 1006 - 1218		85.0 80.0 75.0 55.0		
<b>Intermodulation <sup>(3)</sup> 2nd harmonic</b> (dBc, Min.)	105.0		<b>Safety isolation <sup>(4)</sup></b>	2120 VDC 230 VAC RMS, 50/60 Hz ≤ 0.7 mA ≤ 2.0 mA	
<b>Operating temperature range</b>	0 ... +40°C		<b>Surge Immunity <sup>(5)</sup></b>	1 kV	
<b>Product approval</b>	CE		<b>EMC compatibility</b>	EN 50083-2 2012	
<b>Dimensions</b>	42 x 35 x 29 mm		<b>Weight</b>	0,095 kg	
<b>Material/Plating</b>	Housing/cable clamp Contacts IEC-male connector		Zinc/Nickel PB/Nickel Zinc die-cast, Brass / White Bronze		
<b>NOTES</b>					
(1) F ≥ 40 MHz -1.5 d/oct.					
(2) Class A, according to IEC 60728-2-2012, EMC					
(3) Measured with 120 dBµV return path carrier					
(4) According to IEC-60728-11 2007, Safety					
(5) Surge voltage according to IEC 61000-4-5, EMC (class 2, level 2) applied between the inner and outer of input port					
<b>ORDERING INFORMATION</b>					
<b>API-S-1XX-25-IM SINGLE CLAMP OUTLET</b>			<b>API-S CLAMP OUTLET ACCESSORIES</b>		
<b>API-S-104-25-IM</b>	Single isolated loop through clamp outlet, 4 dB		<b>X10DER-BP1</b>	Push and Click baseplate to support Xtender connector when inserted.	
<b>API-S-108-25-IM</b>	Single isolated loop through clamp outlet, 8 dB				
<b>API-S-110-25-IM</b>	Single isolated loop through clamp outlet, 10 dB		<b>X10DER-C1</b>	Plastic cover to fit over X10DER-BP1 - colour RAL 9010	
<b>API-S-112-25-IM</b>	Single isolated loop through clamp outlet, 12 dB				
<b>API-S-115-25-IM</b>	Single isolated loop through clamp outlet, 15 dB		<b>APF80C/N</b>	Surface mount frame, colour 9010, 80 mm	
<b>API-S KITS</b>					
<b>API-S-104-25-IM-KIT</b>	API-S-104-25-IM + X10DER-BP1 + X10DER-C1				
<b>API-S-108-25-IM-KIT</b>	API-S-108-25-IM + X10DER-BP1 + X10DER-C1				
<b>API-S-110-25-IM-KIT</b>	API-S-110-25-IM + X10DER-BP1 + X10DER-C1				
<b>API-S-112-25-IM-KIT</b>	API-S-112-25-IM + X10DER-BP1 + X10DER-C1				
<b>API-S-115-25-IM-KIT</b>	API-S-115-25-IM + X10DER-BP1 + X10DER-C1				

# TELESTE

TELESTE CORPORATION

[www.teleste.com](http://www.teleste.com)

API-S Series\_180419

Copyright © 2018 Teleste Corporation. All rights reserved. Teleste and the Teleste logo are registered trademarks of Teleste Corporation. Other product and service marks are property of their respective owners.

Teleste reserves the right to make changes to any features and specifications of the products without prior notice. Although the information in this document has been reproduced in good faith, the contents of this document are provided "as is". Teleste makes no warranties of any kind in relation to the accuracy, reliability or contents of this document, except as required by applicable law.