


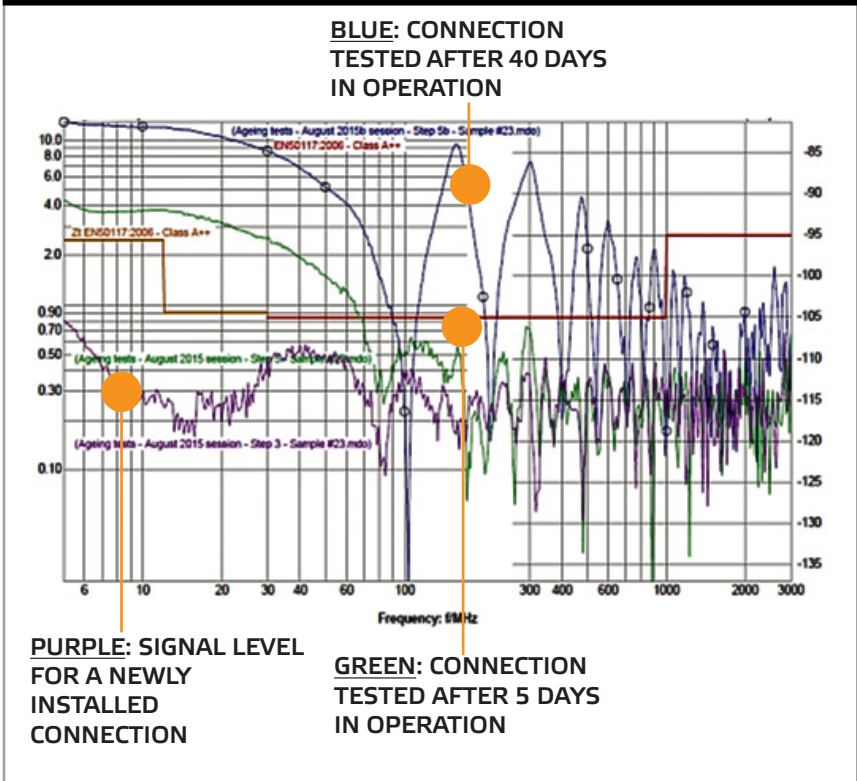


PRODUCT FAMILY	DESCRIPTION
	<p><b>POLY-CHEM™ SHRINK SLEEVES</b></p>
FEATURES	
	<ul style="list-style-type: none"> <li>&gt;&gt; Maximum <b>MOISTURE PROTECTION</b></li> <li>&gt;&gt; <b>EASY</b> installation and re-entry</li> <li>&gt;&gt; Shrinks uniformly 100% <b>EVERY TIME</b></li> <li>&gt;&gt; <b>NO</b> heat, flame or tools required</li> <li>&gt;&gt; <b>NO</b> special skill sets required to perform shrink</li> <li>&gt;&gt; <b>SUPERIOR</b> low temperature flexibility</li> <li>&gt;&gt; Sleeves <b>DESIGNED</b> for maximum moisture protection when fitted on Teleste outdoor passive components</li> </ul>
<p style="text-align: center;">...introducing a new generation of protection</p>	



Teleste and Contech research data shows that already after 40 days of operation without moisture and corrosion protection signal deterioration becomes evident

It is only a matter of time until the next service call can be expected...



## WHY PAY FOR avoidable truck rolls?

**RELIABLE** high-end passives together with the technological **BREAKTHROUGH** of poly-chem™ shrink sleeves, provides a robust, weather proofed sealing interface. Preventing signal integrity issues, service disruptions and truck rolls. Weather proofing should not be a time consuming business, the shrink sleeves are a tool-less easy-to-use solution that fits in small spaces and that can be installed quickly.

We have over **50 YEARS** experience in rubber chemistry and poly-chem technology and over **60 YEARS** of engineering expertise in designing outdoor passives.

Let us become your reliable partner and **SEAL** your **GROWTH**

INCREASE

r e v e n u e  
s t r e a m s  
&  
c u s t o m e r  
c o m f o r t

Teleste has over the years carried out extensive studies of the most common and severe issues associated with connectors that positively leads to network anomalies and expensive truck rolls.

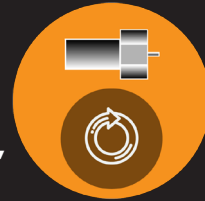
Six common and less awesome findings are presented below:

**FACT**  
# one**CONNECTORS ARE NOT FULLY TIGHTENED AT INSTALLATION**

by reviewing repeat service calls within 60 days the actual amount of loose connectors can be determined...

**FACT**  
# two**CONNECTORS FULLY TIGHTENED AT INSTALLATION BUT LOOSEN DUE TO TEMPERATURE CYCLING**

the operating environment has to be considered as a random process so disturbances like vibrations also affects tightness of connectors...

**FACT**  
# three**DEFORMATION OF PORTS, WHEN TIGHTENING DOWN THE F CONNECTOR**

it is possible to deform the port, especially zinc die cast ports. In addition, ports do not always meet the exacting standards required in today's market...

**FACT**  
# four**F PORT TOLERANCE ISSUES**

zinc die cast ports vary in terms of outer diameter tolerances, in many cases they actually taper from top-to-bottom. In addition, plating thickness varies immensely, as does the thread pitch. All this adds to an immense variation production run by production run, resulting in a wide variation of mating F ports...

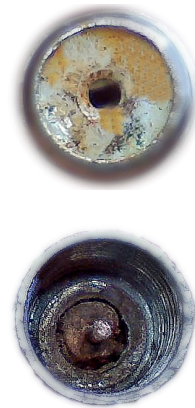
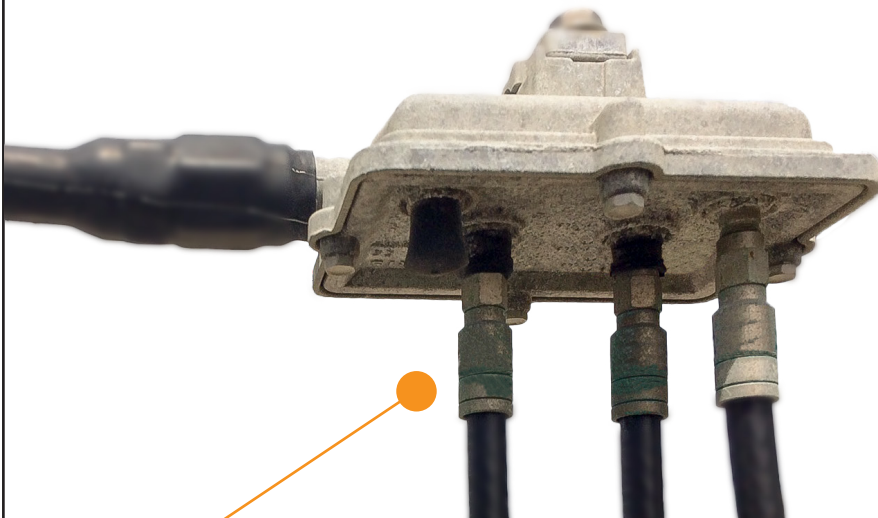
**FACT**  
# five**WATERPROOFING**

it is essential to ensure no moisture is allowed into the connection since it causes corrosion, CPD, etc...

**FACT**  
# six**SYSTEM SECURITY**

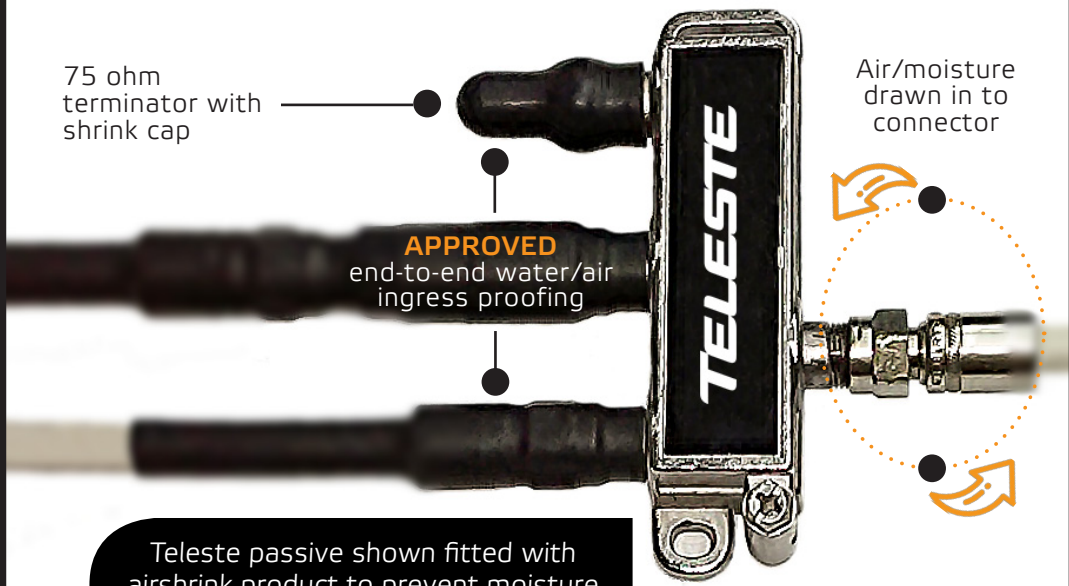
When connectors are left exposed, it becomes an open invitation to subscribers to remove. By encapsulating the drop port, connector front, connector back and cable with an EPDM airshrink these problems are eliminated. By encapsulating the complete connection, you are able to hold the installed connectors in place, the connectors do not loosen...

# REAL EVIDENCE



Example of an outdoor passive installed in open air, near seafront location with salt and moisture corrosion clearly evident

# OUR SOLUTION



Teleste passive shown fitted with airshrink product to prevent moisture ingress and thus eliminate corrosion

**MAXIMISING**  
moisture protections



Teleste passive with airshrink fitted

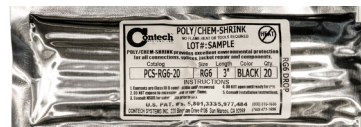


Airshrink fitted over in-line splice

**PICTURE GALLERY**



Fly-lead fitted with airshrink end caps over connectors



**MINIMISING**  
costly service calls

Contech easy removal tool and airshrink packaging

**PHYSICAL PROPERTIES**

**POLY/CHEM SHRINK - PHYSICAL PROPERTIES**

PROPERTIES	VALUE	TEST METHODS
TENSILE STRENGTH	1800 psi	ASTMD-412
ELONGATION	400%	ASTMD-412
DUROMETER	60 Shore A	ASTMD-2240
SPECIFIC GRAVITY	1.35	STMD-792
HEAT AGING	90% Ret.	168 hrs@ 136°C
WATER ABSORPTION	<.05%	ASTMD-570
SERVICE TEMP. RANGE	-55°C to+ 150°C	MS-202C
DIELECTRIC STRENGTH	800 V/MIL	ASTM D-876

**ORDERING INFORMATION**

**ORDERING INFORMATION**

PART NUMBER	DESCRIPTION	PART NUMBER	DESCRIPTION
PCS-RG59/6-20	Shrink sleeves for RG59/6 connectors	PCSE-540-US-G-2	Shrink Sleeves for 0.540 Gilbert splice connect.
PCS-RG11-S-6	RG11 drop splice	PCSE-540-P-PP-4	Shrink sleeves for 0.540 PPC series connect.
PCS-RG11-10	Shrink sleeves for RG11 drop connectors	PCSE-540PP-CC-4-SS	Shrink Sleeves for .540 Cabelcon splice connect.
PCSE-RG11-S-T-2	RG11 Feed through connector and splice block	PCSE-540-P-G-4	Shrink Sleeves for 0.540 Gilbert series connetc.
PCSE-RG11-P-PP-4	Shrink sleeves for RG11 PPC series connectors	PCS-CAP-RG59/6-20	Poly Chem shrink caps end RG59/6 connectors
PCSE-540-US-PP-2	Shrink sleeves for 0.540 PPC splice connectors		

STANDARD COLORS: Black for F Boots & Splices, Red for Disconnect Caps  
 Other colors, sizes and lengths available at request  
 EXAMPLE: PCS-RG59/6-20, i.e. RG59/6 Boot 20 pieces per pouch

**5 YEAR**  
shelf life