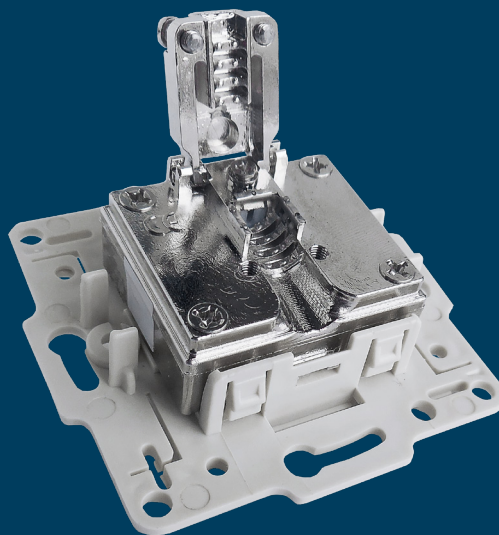
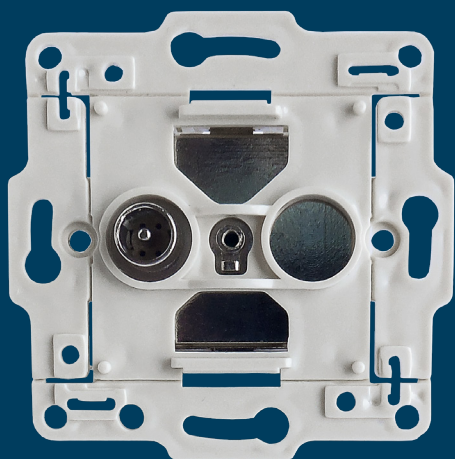


DOCSIS 4.0
R E A D Y



Indoor RF passives

Next Generation Wall Outlets

4WO-BEL

The 4WO-BEL is a very compact semi isolated wall outlet. This outlet uses Teleste unique cable clamp technology and fits into most existing plastic mounting frame systems.

Features

- Frequency range up to 2 GHz, Docsis 4.0 compliant
- Electromagnetic compatibility exceeds Class A+ (= Class A +10 dB)
- Semi Isolated System Outlet according to Cenelec EN60728-11
- Outstanding RF performance

TELESTE

INDOOR RF PASSIVES / 4WO-BEL

ELECTRICAL SPECIFICATIONS			
Frequency (MHz)	Min.	Typ.	Max.
INSERTION LOSS (dB) - IN TO OUT			
5 - 10		0.3	0.5
10 - 470		0.3	0.4
470 - 1006		0.5	0.7
1006 - 1218		0.7	0.8
1218 - 1794		0.8	1.0
1795 - 2000		1.0	1.3
RETURN LOSS (dB) - INPUT/OUTPUT			
5 - 15	18.0		
15 - 1218	22.0 ⁽¹⁾		
1218 - 1794	13.0		
1794 - 2000	13.0		
GENERAL SPECIFICATIONS			
Frequency Range	5 - 2000 MHz	Nominal Impedance	75 Ohm
Operating Temperature Range ⁽²⁾	0 to +55 °C	Product approval	CE
Dimensions	w/o connector with	40 x 34 x 21,5 mm 40 x 34 x 33 mm	Weight 0,030 kg (without plastic)
Surge Immunity Test ⁽³⁾	1 kV, 1.2/50 µs	Intermodulation distortion (dBc, Min.) ⁽⁴⁾ 2f1, f1+f2, 2f2	120.0 ^(a) 120.0 ^(b)
Electromagnetic Compatibility ⁽⁶⁾ (dB, Min.)		5 - 30 30 - 300 300 - 470 470 - 950 950 - 2000	95.0 95.0 90.0 85.0 75.0
Class A+ (= Class A +10dB)			
Safety Isolation ⁽⁵⁾	2120 VDC	Inner conductor Input to Inner conductor Output Leakage current	≤ 0.7 mA, ≥ 1 minute
	230 VAC RMS, 50/60 Hz	Inner conductor Input to Inner conductor Output Leakage current	≤ 2.0 mA RMS
Materials	Housing		Zinc + Nickel plating
	Connectors	INPUT: cable clamp contact spring	Zinc + Nickel plating Beryllium Copper + Nickel plating
		OUTPUT: IEC-male connector IEC-male pin	Zinc + Nickel plating Brass + Nickel plating
NOTES		DIMENSION DRAWING & BLOCK DIAGRAM	
<ol style="list-style-type: none"> At F ≥ 40 MHz -1.5 dB/oct. min. ≥ 14 dB at 1218 MHz Temperature range within which the device will be within specifications Surge voltage according to IEC 61000-4-5, EMC (class 2, level 2) applied between the inner and outer conductor of each port Two carriers (60 & 65 MHz), applied to each port, @ 120 dBµV <ol style="list-style-type: none"> No surge Measured after 1 pulse of 1 kV (1.2/50 µsec) have been applied to each port According to IEC 60728-11 2007, Safety EMC exceeding Class A+ (= Class A + 10dB), according to IEC 60728-2 			
ORDERING INFORMATION			
4WO-BEL/AS	Compact semi isolated wall outlet, surface mount		
4WO-BEL/GR-S	Compact semi isolated wall outlet, with adapter		

TELESTE

TELESTE CORPORATION
www.teleste.com

4WO-BEL_20220921

Copyright © 2022 Teleste Corporation. All rights reserved. Teleste and the Teleste logo are registered trademarks of Teleste Corporation. Other product and service marks are property of their respective owners.

Teleste reserves the right to make changes to any features and specifications of the products without prior notice. Although the information in this document has been reproduced in good faith, the contents of this document are provided "as is". Teleste makes no warranties of any kind in relation to the accuracy, reliability or contents of this document, except as required by applicable law.