

LET US  
enlighten  
YOUR FIBRE  
NETWORKS



Fibre Multipurpose Enclosure - TEN-FME2-Dx

# enlighten Individual IP68 Drop Enclosure

The TEN-FME2-Dx is a unique drop enclosure designed to be installed in both Underground and Overhead applications. Each of the individual fibre customer drop connections are housed within their own unique IP68 chamber. This ensures that each customer connection is isolated from the rest should water enter the chamber through incorrect installation of the customer drop cable.

## Features

- Uses existing drop cables and connectors – no special versions needed
- IP68 protection to each individual customer – protects other customers on the enclosure
- Designed for use in both Underground and Overhead applications
- Top Hinged Mechanism
- Tool-less ease of use
- Unique and robust catch mechanisms

**TELESTE**

# TEN-FME2-Dx

## IP68 PER CONNECTOR

Individual chambers provide unique IP68 sealing for each customer drop. Standard fibre connectors are used and are sealed with dual integrated sealing mechanisms, ensuring no water can pass between the customer drop and network sides.

**Unique individual IP68 drop chambers**

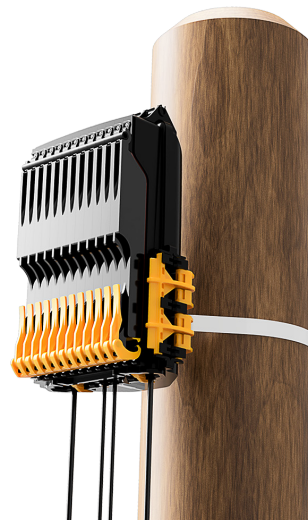
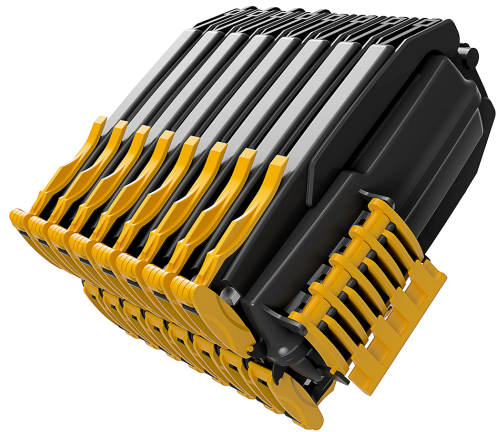
**Damage or incorrect closure of any individual chamber will not affect performance or other chambers**

**Uses standard fibre drop cables and connectors**

**No special tools needed**

**Pole mounted and Underground solution**

**Up to 16 individual customer drop chambers**



## enlighten TEN-FME2-Dx / INDIVIDUAL IP68 DROP ENCLOSURE

ENCLOSURE SPECIFICATION - Optical parameters				
Cable configuration	Network side	2 x main cables	OD = 6 - 9 mm	Termination method: Cable sheath fixing and termination of central strength member Optional: Looped cable termination is available
		2 x branch cables	OD = 4 - 6 mm	Termination method: Cable sheath fixing
	Drop cable side	4-16 x drop cables (depending on model; 4,8,12,16)	OD = 4 - 6 mm	Pre-installed with standard SC connectors
Storage and splitter configuration	Splice	72 splices max.	6 trays, 12 splices/tray	45 mm long heat shrinkable splice protectors
	Spliced-in splitter	1:32, 1:16, 1:8, 1:4	Standard compact housing for bare fibre configuration	
	Splitter with connector	1:16, 1:8, 1:4	Bare fibre on common port, 900micron, tight buffered fibres on outgoing ports installed with optical connectors	
	Storage Housing Fibre at common port Fibres at drop side	4 universal storage slots are available on fibre management plate (FMP) for any combinations selected from listed splitter types Standard sizes, metal housings 250micron G657A1 fibre, 1,5m long 900micron tight buffered G657A1 fibre, 1,5m long with SC connector (PC or APC - upon customer request)		
ENCLOSURE SPECIFICATION - Mechanical parameters				
Material		PAGF30	Closure body, Chamber covers, Locking elements	
		PC ABS	Adapter holding and cable termination plate, fibre management plate	
		Gel (cross-linked white oil + additives)	Cable entrances	
		Ultra-soft silicone rubber	Dome-to-dome and chamber cover-to-dome sealing	
Dimensions (W x H x D)	225 x 210 x 65 (single side conf.) 225 x 210 x 125 (double side conf.)	Weight	1.4 kg (single side conf.) 2.2 kg (double side conf.)	fully loaded with splice trays, adapters and pigtails
Enclosure classification	IP68	Application area	Underground (manhole, handhole) Aerial (pole, façade)	Direct buried is not recommended
ORDERING INFORMATION				
TEN-FME2-D4	Fibre Multipurpose Enclosure 2 Drop version 4 customers			
TEN-FME2-D8	Fibre Multipurpose Enclosure 2 Drop version 8 customers			
TEN-FME2-D12	Fibre Multipurpose Enclosure 2 Drop version 12 customers			
TEN-FME2-D16	Fibre Multipurpose Enclosure 2 Drop version 16 customers			



TELESTE CORPORATION  
www.teleste.com

Enlighten TEN-FME2-Dx\_20220907

Copyright © 2022 Teleste Corporation. All rights reserved. Teleste and the Teleste logo are registered trademarks of Teleste Corporation. Other product and service marks are property of their respective owners.

Teleste reserves the right to make changes to any features and specifications of the products without prior notice. Although the information in this document has been reproduced in good faith, the contents of this document are provided "as is". Teleste makes no warranties of any kind in relation to the accuracy, reliability or contents of this document, except as required by applicable law.