



Pre-Assembled Network Solutions

ACCESS NETWORKS

enlighten UPoC – Underground PoC

Teleste tailor made solution for underground placement of Point of Connection Platforms. Designed to fit into existing underground chambers where normal cabinet solutions are not possible or allowed.

Features

- Easily installed in underground chambers
- Simple easy to use screw lifting mechanism
- Galvanised steel frame and lifting mechanism
- Glass Reinforced Polyester enclosures, IP65 rated
- Optional internal doors and mounting fixtures
- Supports mounting of various FTTx products



TELESTE

UPoC TRUE CUSTOMISATION POWER

Teleste pre-assembled solutions provide operators with cost effective faster network roll-outs with improved quality and less problems compared to field installations.

Our customization solutions have over the last 70 years proven to provide increasing efficiency, reducing complexity and ensuring maximum optimization - we develop high quality products with care and detail in design, build, QA and shipping processes.

Versatile FTTx Solutions in UPoC Enclosures

Multiple configurations of FTTx solutions can be incorporated into a UPoC. These include splice & splitter trays, ODFs & patch panels and fibre & duct management along with various other equipment can be mounted onto bespoke back panels which are then fixed inside the enclosure.



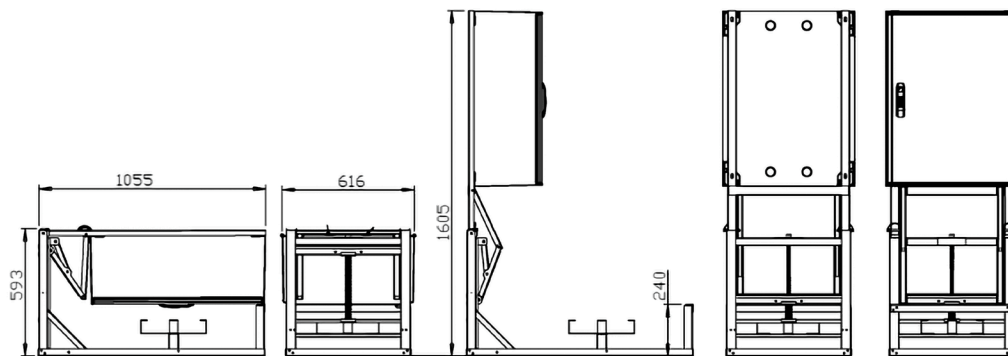
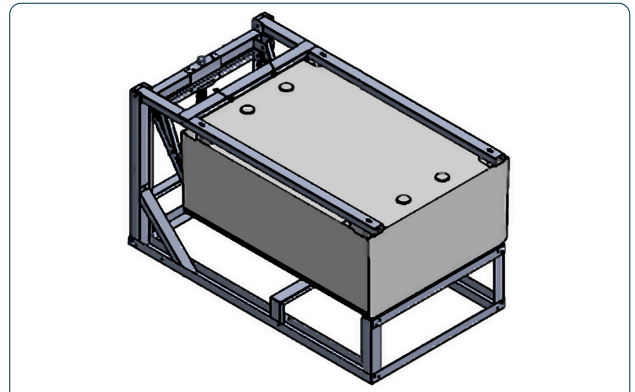
Various FTTx Configurations for UPoC Integration

Traditional items such as fibre distribution enclosures and splice/splitter fibre closures along with other types of equipment can be mounted within a UPoC. Internal hinged doors and frame assemblies can support these items making them easy to install, upgrade and maintain.

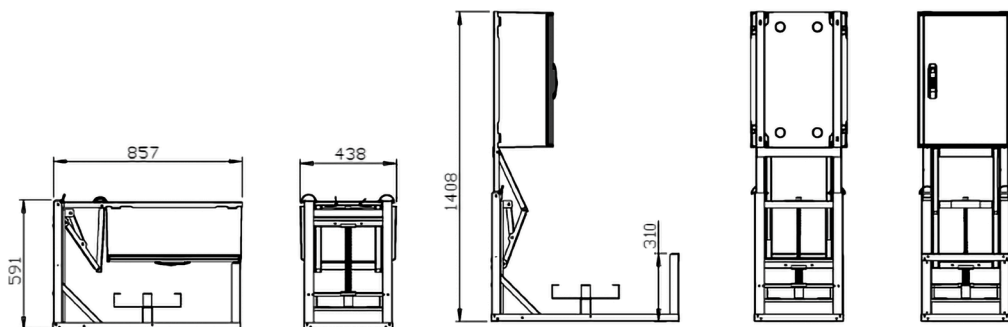


The UPoC supports mounting of various FTTx products:

- Fibre splicing and splitter trays
- Customer connection panels
- Distribution and access boxes
- Cable and duct management

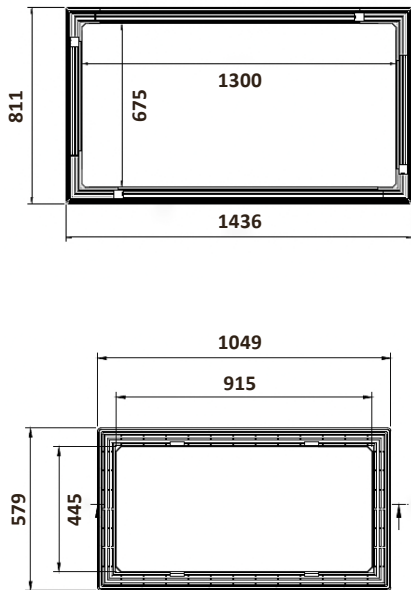


The UPoC cabinet solution is available in two different sizes



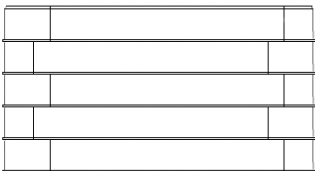
enlighten POINT OF CONNECTION PLATFORMS / UNDERGROUND PoC

GENERAL			
ENCLOSURE			
Dimension enclosure (DxWxH)	Size1: 320 x 616 x 816 mm Size2: 252 x 438 x 618 mm	Dimension enclosures on frame brackets upright (DxWxH)	Size1: 320 x 616 x 1605 mm Size2: 252 x 438 x 1408 mm
Dimension enclosures on frame bracket folded (DxWxL)	Size1: 593 x 616 x 1055 mm Size2: 591 x 438 x 857 mm	Rating	IP66, IK10
Material	Polyester	Colour	RAL 7035
MOUNTING FRAME			
Lifting mechanism	Gas springs	Material	ALUZINC 2,0 AZ 150 and 3,0 AZ 150
MECHANICAL LAYOUT - MODULAR CHAMBERS			



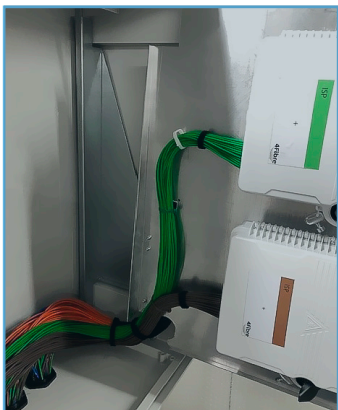
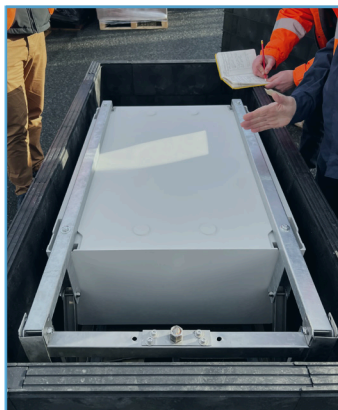
VERSATILE INTEGRATION...

The Teleste Underground PoC solution seamlessly integrates with two different sizes of modular access chamber systems.



Chambers are designed as component-based stacking ring section systems

IMAGERY



ORDERING INFORMATION

UPoC TCS-UPOC-686LF-1 TCS-UPOC-466LF-1	Underground PoC 816x616x323 with lifting frame and internal accessory door Underground PoC with integrated metal lifting frame to fit chamber size FW6
Chambers 915 x 445 SubTerra™ 1300 x 675 SubTerra™	Single Piece Chamber Section from Plura Innovations Single Piece Chamber Section from Plura Innovations

TELESTE

TELESTE CORPORATION
www.teleste.com

Enlighten Optical Distribution Box Series TEN-UPoC_240327

Copyright © 2024 Teleste Corporation. All rights reserved. Teleste and the Teleste logo are registered trademarks of Teleste Corporation. Other product and service marks are property of their respective owners. Teleste reserves the right to make changes to any features and specifications of the products without prior notice. Although the information in this document has been reproduced in good faith, the contents of this document are provided "as is". Teleste makes no warranties of any kind in relation to the accuracy, reliability or contents of this document, except as required by applicable law.